

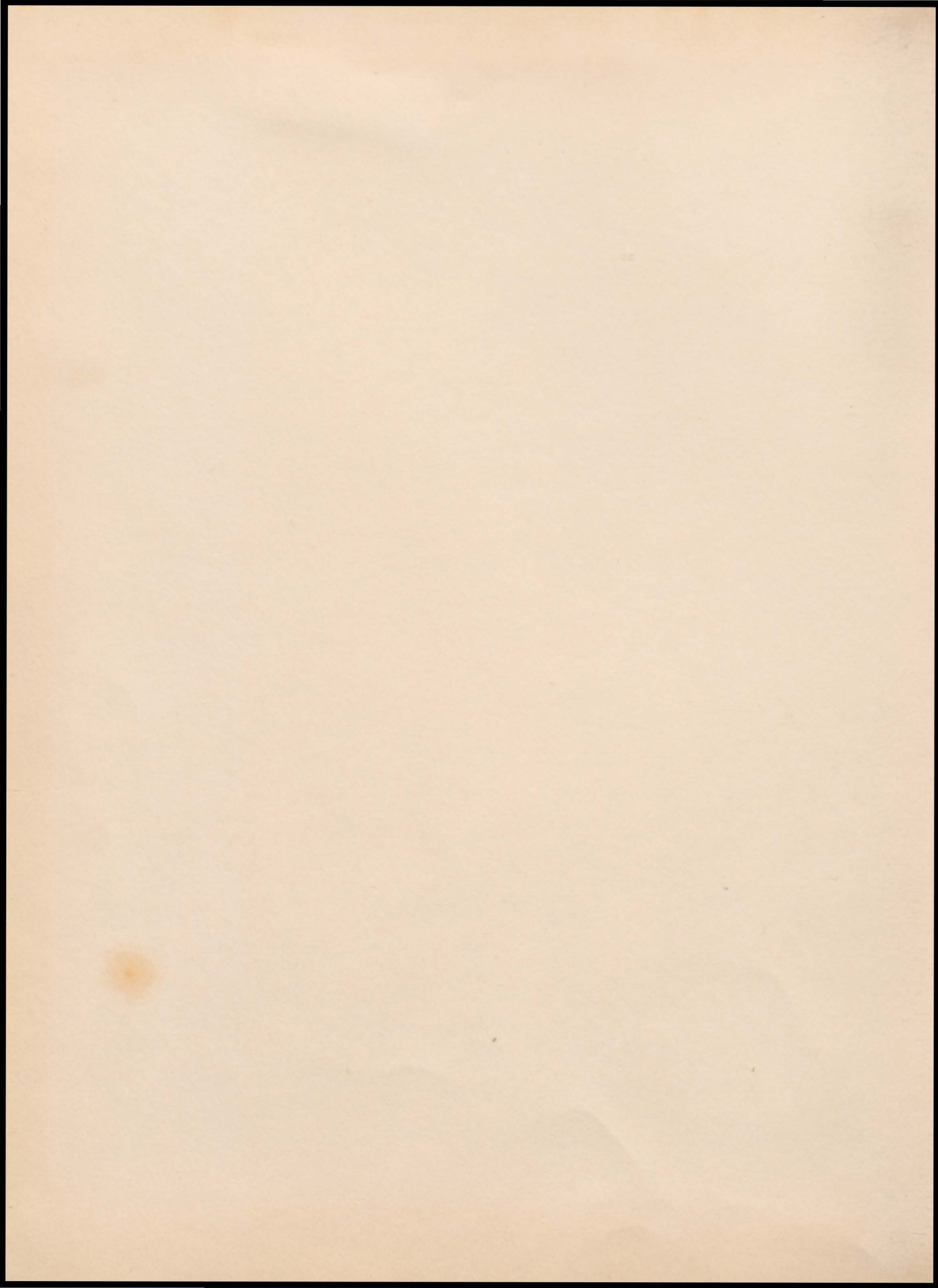
THE SENECA WARRIOR



1961







The Seneca Warrior 1961

Vol. XV

Seneca High School
Seneca, Missouri



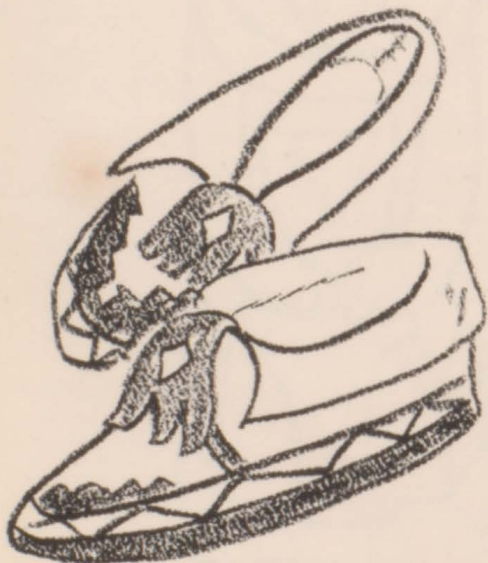


Judy and Ronnie Rosiere are typical of several of our students who can boast Indian ancestry. Some of their forefathers were of the Seneca-Cayuga tribe.

Braves and Maidens Reflect Heritage

Ours is the school of the "Seneca Indians" . . . braves and maidens . . . ever loyal and proud of our heritage and traditions. Seneca Indians lived in this area in bygone years, and many persons here lay claim to Indian ancestry, although most persons living in Seneca are not Indians . . .

Perpetuated by the town of Seneca and its high school, the name of this tribe is from the Iroquoian term which means "people of the standing or projecting rock or stone." The tribe belongs to the Iroquoian linguistic family, the largest division of the Five Nations or League of the Iroquois, who were first found occupying western New York.



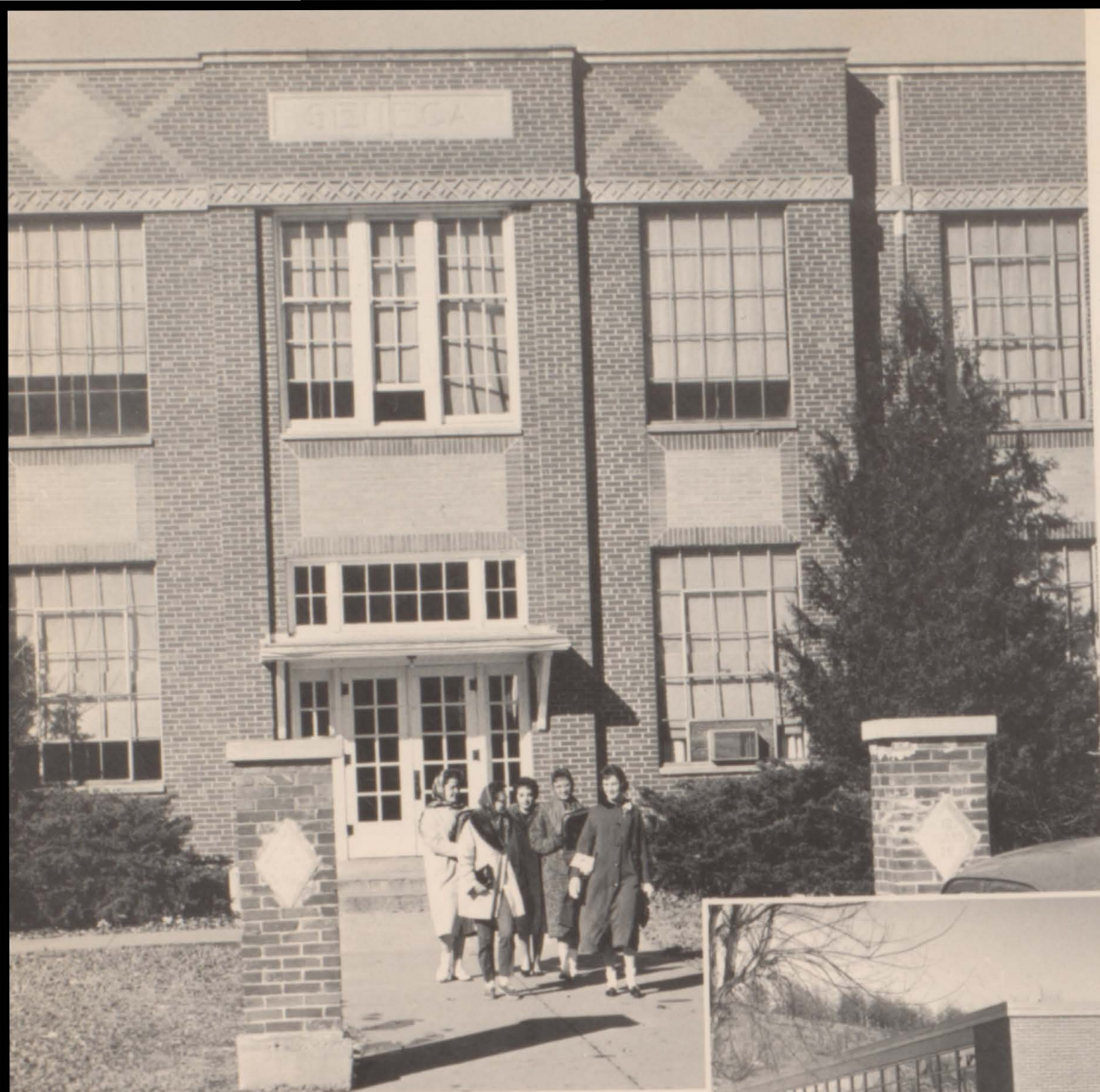
The Senecas are principally located in Ottaway County, Oklahoma, which borders our town. They moved from Ohio in 1832, receiving in exchange for their Ohio lands 67,000 acres in the Indian Territory, which were bounded on the east by the Missouri state line, and on the south by the north line of the Cherokee Nation. It was a tract that extended west 15 miles and north 7 miles . . .



Table of Contents

FOREWORD	2-3
BUILDINGS	4
BOARD OF EDUCATION	5
ADMINISTRATION	6-7
FACULTY	8-9
STUDENTS	12-37
Seniors	12-23
Juniors	24-27
Sophomores	28-31
Freshmen	32-36
Eighth Grade	37
CLASSES	38-51
ACTIVITIES	52-73
ATHLETICS	74-79
SNAPSHOTS	80-81
ADVERTISEMENTS	82-98
ACKNOWLEDGMENT	99
INDEX	99-100





Main plant of Seneca High School, which has been in use since March, 1937. This building was added to the gymnasium-auditorium structure, which had been in use since August, 1910.



New six-room addition to the grade school building. The grade building was new in January, 1956.

Rear view of new addition to grade school building, housing home economics, industrial arts, science rooms.



Indians Anticipate New Building

Plans for future location of the high school in the present elementary school building proceeded this year, with completion in December of an addition to that building. The addition joined the grade school on the east and included 6 rooms for housing home economics, industrial arts, and science departments, as well as a study hall-library.

Hampered throughout the year by

crowded conditions that followed last year's loss of the frame annex by fire, the high school schedule was helped when the newly completed rooms at the grade school were available for use. Music classes were then transported, lessening the heavy demand on the gymnasium; and science students were able to begin using the newly equipped laboratory the second semester.

Board of Education

Those elected to the Board of Education should be men of unquestioned integrity and ability, and have a genuine interest in public school edu-

cation. They must deal with all problems confronting our school.

We are grateful for the service these men render.

Mac Watts, President
Ernest Crabtree
Jack Brady



Wilma Howsmon, Clerk
Wayne King
John Dragoo





O. W. Fox, B.S., M.S.

Superintendent Works for Good School

Mr. Fox, our superintendent, is the head of our Indian tribe. As a friend or superintendent he can't be beat in the opinion of most students and faculty members. He holds meetings, interviews new teachers, "peps up" pep sessions, and frowns upon "bad" boys.

His responsible and far-sighted planning kindle the spark which makes Seneca High School the fine school that it is, and his work is never done.



Mrs. Wilma Howsmon
Secretary to the Superintendent



Iva E. Wells, B.A., M.S.

Principal Serves Thirty-Five Years

Although we know that Mrs. Wells deserves a well-earned rest, her retirement at the end of this year leaves a feeling of sadness in every heart.

Hers has been a lifetime dedicated to teaching. Coming to Seneca in the fall of 1926, when only 85 students were enrolled in high school, she has given constant understanding, encouragement, and devotion for thirty-five years.

Not only we students but also many of our

parents have known the leadership of this outstanding teacher and principal. She has won a place of high respect and warm affection among the student body, the faculty, and the townspeople.

We deeply appreciate her service to us as a teacher and friend, and we will miss having her to guide us. Seneca High School will never be the same without her.



Mrs. Inez Buzzard
Social Studies
Senior Sponsor
N.E. Okla. Teachers B.S.
Kansas State of Pittsburg M.S.
"Class, the bell has rung."

Mrs. Mabel Brown
Home Economics
Junior Sponsor
Southwest Mo. State B.S.
"Do I smell something burning?"



Michael Elliott
Music, English
Freshman Sponsor
Kansas State of Pittsburg B.M.E.
"PLEASE sit down, girls; and next time I won't say please."

Burl Fowler
Coach, Physical Education
Freshman Sponsor
Kansas State of Pittsburg B.S.
"All right! Six laps for everybody."



Bill Gallup
English, Spanish
Junior Sponsor
Kansas State of Pittsburg A.B.
"Okay, knock it off! "

Tribal Counselors See That Functions Are Carried Out

Well-qualified instructors were Seneca High's governing chiefs this year--all of them capable and ready to teach students many things they will need to know long after they have left the Seneca Indian tribe.

Guiding, teaching, and assisting each Indian brave and maiden has been the faculty's mutual objective, and high school students will long remember and appreciate their help. They know that their teachers are their friends.

Mrs. Marjorie Gilbert
 Librarian, English
 Freshman Sponsor
 Kansas State of Pittsburg, B.S.
 "That book is overdue."

Bill Jones
 Science
 Sophomore Sponsor
 Colorado A & M, B.S.
 "Take your seats, class; get out a pencil--we're going to have a test."

Mrs. Reitha McCracken
 Guidance, Commerce
 Paper and Yearbook Adviser
 Senior Sponsor
 F.T.A. Sponsor
 Southwest Mo. State B.S.
 Drake University M.S.
 "Work by yourselves, girls."

Robert Maben
 Industrial Arts
 Freshman Sponsor
 Kansas State of Pittsburg B.S.
 "Turn off that motor so I can talk."

Rex Mhoon
 Social Studies
 Junior Sponsor
 Student Council Sponsor
 Kansas State of Pittsburg B.S., M.S.
 "Who says studying isn't fun?"

Mrs. Doris Nichols
 Commerce
 Junior Sponsor
 University of Oklahoma B.S.
 Kansas State of Pittsburg M.S.
 "Do I have to pound this into your heads?"

Ralph Record
 Mathematics
 Sophomore Sponsor
 Math Club Sponsor
 Kansas State of Pittsburg B.S.
 "I'm not always right, but very seldom wrong."

Rod Reid
 Coach, Biology, P.E.
 Sophomore Sponsor
 Wayland Baptist College B.A.
 "I can stay here until you decide to be quiet."

Harold Servis
 Speech, English
 Junior and Senior Plays
 Senior Sponsor
 Iowa State Teachers B.S.
 "I shouldn't have to shout to make myself heard."

James A. Wells
 Citizenship
 Kansas State of Pittsburg B.S., M.S.
 "Can we have it quiet, please?"





Larry Ellis, Ronnie Brattin, Beverly Hutchison, Susann Rinehart.

Students and Classes

Heavily loaded with baggage, the Seneca Indians left their village on the Sandusky River in Ohio, embarked by steamship from Dayton, and arrived November 16 at St. Louis. They reached their destination on the Cowskin River, northeastern Indian Territory, on July 4, 1832. Their journey had taken eight months and was beset by long delays and great suffering from

winter storms, floods, sickness, and death.

A historical marker now stands on Highway 60 west of our town, indicating the Seneca Agency site 21 miles south near Buffalo Creek, which was established at that time for Senecas, Cayugas, Shawnees, and remnants of six other tribes that had come from Ohio over a Trail of Tears.





MARTHA ALLEN
 "Braids" . . . has the longest hair in class . . . generous and sweet.
 Glee Club 1,2,3,4; Mixed Chorus 3, 4; Class Play 3.



TERRY ANDERSON
 "Andy" . . . good looking . . . magnetic personality . . . a terrific sport.
 Basketball 1,2,3,4; Football 3,4; Baseball 1,2,3,4; Class Play 3; Mixed Chorus 1,2,3.

Bold Warriors and Modest Maidens Graduate . . . Seniors at Last

After four years of high school, the seniors are ready to leave the tribe. Their education at S.H.S. has prepared them to take their place in the world.

This is it . . . the end . . . the beginning; for today they step from that preparation, and tomorrow they step into the future.

Barbara Oleman, vice-president; Ken Rogers, president; Patti Thomazin, secretary-treasurer.





EARL BEAVERS

"E.B." . . . likes excitement . . . ready with a smile . . . eager to please.
Football 4.



LINDA BENNETT

"Lin" . . . peppy cheerleader . . . sugar and spice . . . likes Navy . . . popular . . . pinned.
Cheerleader 2,3,4; Glee Club 1,2,3,4; Red Peppers 1,2,3,4; Band 1,2,3; Mixed Chorus 2,3,4; WARRIOR 3,4; MOCCASIN PRINT 4; F.T.A. 4; Class Queen 4; Class Play 3.



TWYLA BENNETT

"Songbird" . . . has voice will travel . . . giggles . . . likes excitement.
Glee Club 1,2,3,4; Band 2,3,4; Mixed Chorus 1,2,3,4; Red Peppers 1,2,3,4; MOC. Print 4; F.T.A. 4; Student Council 1; Class Officer 1.



SHIRLEY BLACK

"Shug" . . . has that certain something . . . attracting personality . . . reserved . . . sweet.
Glee Club 1,2,3,4; Band 3,4; Mixed Chorus 1,2,3,4; Red Peppers 1,2,3,4; Warrior 3,4; MOC. PRINT Co-editor 4; F.T.A. 4; School Spirit Award 3.



MARILYN BLATTER

"Mari" . . . perfect poise . . . capable and capricious . . . sweet sophistication.
Student Council 3; Library 2,3; MOCCASIN PRINT 4; History Award 3.



SHIRLEY BRADY
 "Shirl" . . . redhead . . . happy-go-lucky . . . generous . . . sincere . . . friendly.
 Red Peppers 1,2,3,4; Glee Club 1,2,3,4; MOCCASIN PRINT 4.



RONNIE BRATTIN
 "Dynamite" . . . brains and brawn . . . at home on the football field . . . Student Council president.
 Football 3,4; Track 3, Student Council 4.



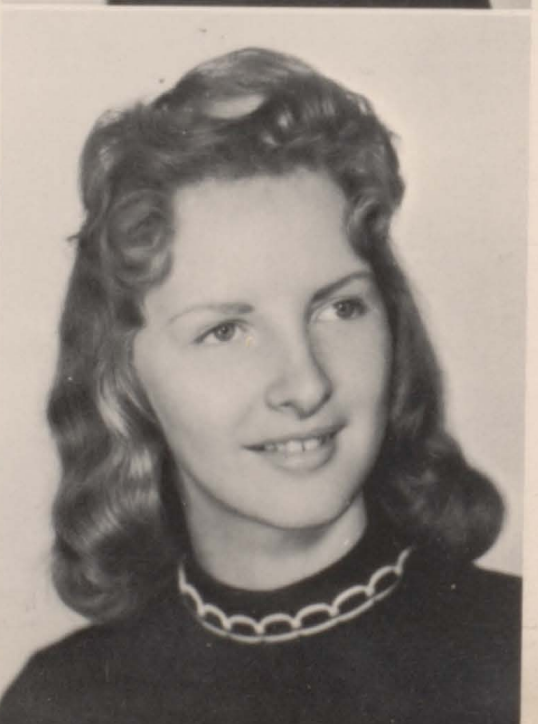
JERRY BRECHT
 "Jer" . . . class funny man . . . sly as a fox . . . always ready with a joke.



BEVERLY BROWN
 "Bev" . . . wide-eyed . . . sympathetic, quiet and composed . . . a desire to please.
 Red Peppers 3,4; F.T.A. 4.



DERALD BROWN
 "Der" . . . independent . . . ready to try something different . . . co-operative.

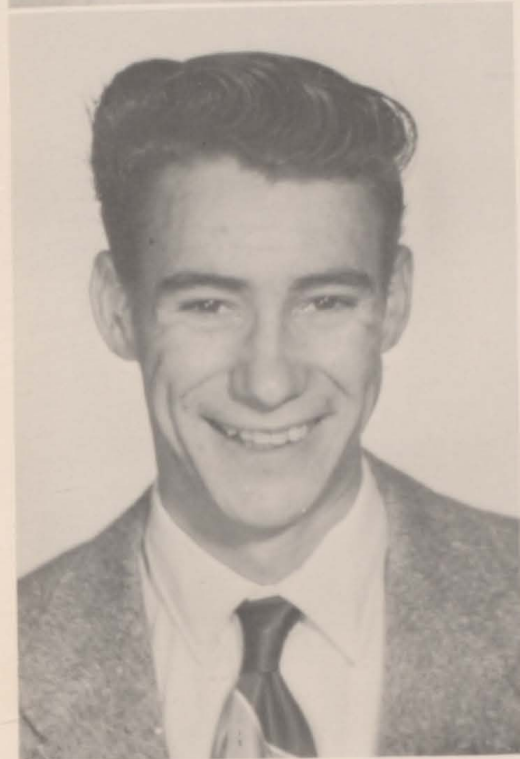


LINDA BROWN
 "Drum Majorette" . . . sincere and nice to be with . . . confident . . . good personality.
 Twirler 2,3; Drum Majorette 4; Moccasin Print 4.

Seniors



MARGARET BRYANT
"Margie" . . . quiet . . . good natured . . . sociable and reliable. Glee Club 1,2,3,4; Twirler 3,4; MOCCASIN PRINT 4.



PATRICIA CAREY
"Pat" . . . calm and distinguished . . . can hold her own. Glee Club 1,4; Library 2,3,4.



RICHARD CONNER
"Dick" . . . thoughtful . . . courteous . . . always on hand to be helpful.



JANICE COOK
"Cookie" . . . cute as a button . . . full of life . . . cheerleader. Class Officer 1; Red Peppers 1,2,3,4; Cheerleader 4; Class Play 3; MOCCASIN PRINT 4; Football Queen Attendant 2.



LOYD CRAIN
"L. C." . . . worries very little . . . can be very determined . . . nice grin. Student Manager 2; Track 1,2,3.

Seniors

EVERETT CUPP

"James" . . . ready for fun . . . willing to work . . . quiet disposition . . . crazy schemes.

DAVID DANIELS

"Dave" . . . attentive . . . sociable and reliable . . . thoughtful of others.

CAROLYN DARR

"Kay" . . . loves to be active and busy . . . musically inclined . . . sweet smile.

Glee Club 1,2,3,4; Band 1,2,3,4; F.T.A. 4; Red Peppers 1,2,3,4; Class Queen 2; Class Officer 2; Miss Merry Christmas 3; MOC. PRINT 4; WARRIOR 3,4; Student Council 3; Class Play 3.

DELORIS DRAKE

"Doll" . . . quiet blonde . . . composed . . . a desire to please. Glee Club 2,3; Class Play 3; MOC-CASIN PRINT 4.

KAY DURBIN

"Katy" . . . a changeable mood . . . a sense of humor . . . a friend to all.

SYDNIA FLEETWOOD

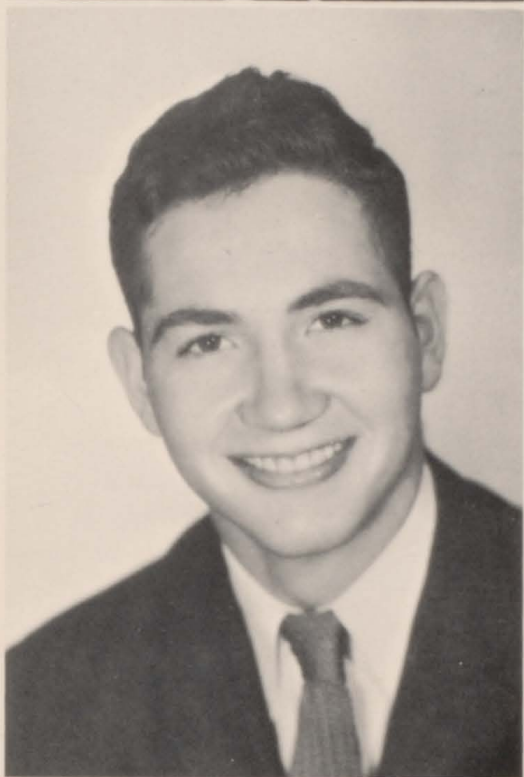
"Syd" . . . girl on the go . . . deliberate and sure . . . she's sweet, gay, and engaged. Glee Club 1,2,3,4; Red Peppers 1,2,3,4; WARRIOR 3,4; MOC-CASIN PRINT 4; F.T.A. President 4.



JACK GILMAN
 "Gil" . . . gift of gab . . . suave and gallant escort . . . calm . . . distinguished.
 Class King 2; Class Play 3; Student Council 4; Track 4.



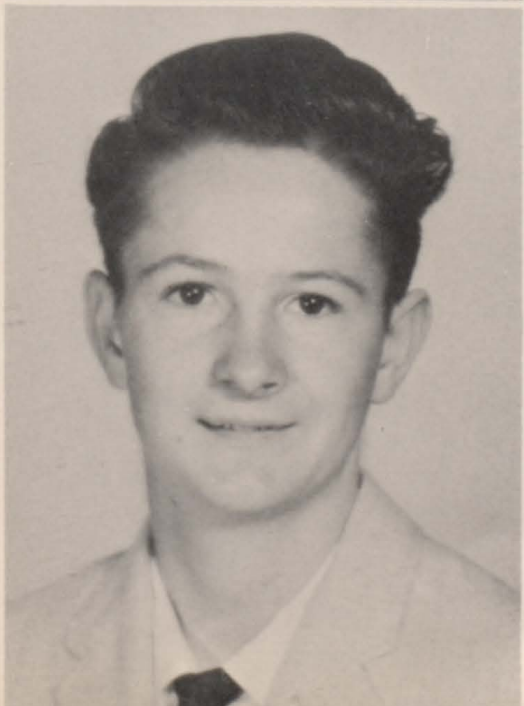
MARY ELLEN GLOVER
 "Meg" . . . a twinkle lurks in her eyes . . . nice as the day is long.
 Red Peppers 1,2,3; Glee Club 2; F.H.A. 1,2; MOCCASIN PRINT 4.



ARNO GRAVES
 "Golden Glover" . . . easy going . . . strong silent type . . . roguish smile.
 Class King 3; Football 2,3,4; Track 2,3.



GWENDOLYN GREEN
 "Gwen" . . . infectious grin . . . likeable . . . sweet and reliable.
 Glee Club 2,3,4; MOCCASIN PRINT 4.

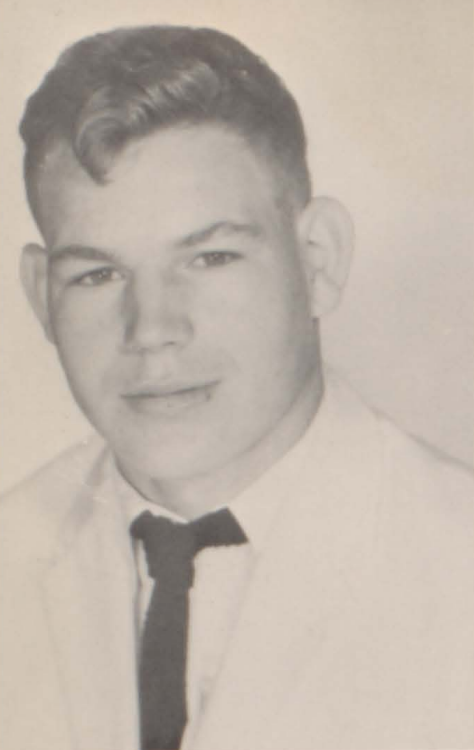


RONNIE GRIFFIN
 "Ron" . . . everybody's pal . . . well-mannered and a friend to all.

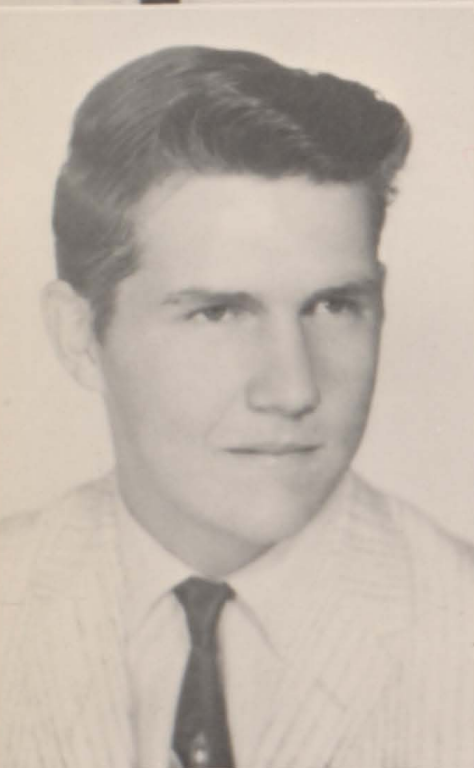


DONNA GUNLOCK
 "Vivacious" . . . attentive . . . thoughtful . . . gay . . . sparkling . . . cheerleader.
 Glee Club 1,4; Band 2; Class Queen 3; F.T.A. 4; Cheerleader 4; MOCCASIN PRINT 4; Red Peppers 1,2,3,4.

Seniors



STEVE HARRYMAN
"Harry" . . . curly-haired masculin-
ity . . . clever . . . affable.
Football 4.



DONNA HAYES
"Blondie" . . . our gay, daredevil
head twirler . . . sweet and sassy.
Glee Club 1,2,3,4; Twirler 2,3,4;
Red Peppers 1,2,3,4; MOCCASIN
PRINT 4.



JACK HIGGINBOTHAM
"Hig" . . . tease . . . dare me . . . a
participant in all class antics.
Football 2.



CHARLES HOFF
"Chicken" . . . Mr. Mischief . . .
football star . . . a true blue friend.
Baseball 2,3; Football 3,4.



ALICE HOFFMAN
"Al" . . . ready with a smile . . .
tries to please . . . warm and friendly
disposition.



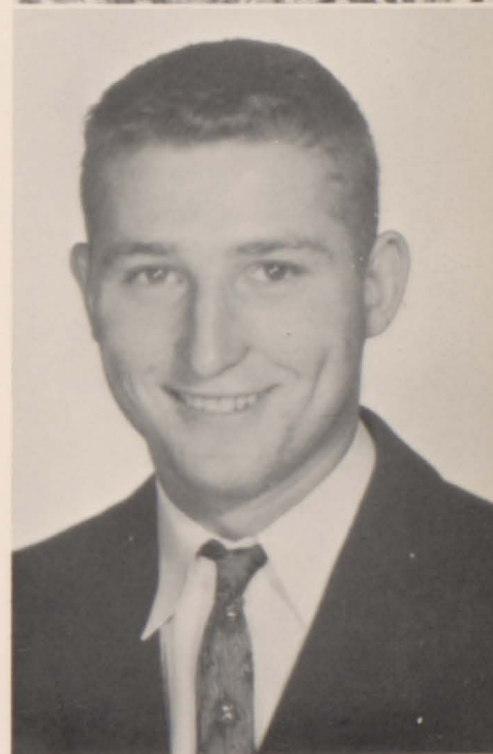
EVELYN HUFFMAN
 "Evie" . . . sincere and nice . . .
 calm . . . sweet and shy.
 Glee Club 4; MOCCASIN PRINT 4.



BOB HOWARD
 "Howie" . . . thoughtful of others
 . . . fond of fun . . . friendly.



MARK KING
 "Marko" . . . good natured . . . seeks
 fun and excitement . . . sport . . .
 saved a man's life.
 Football 2,3; Basketball 3,4; Base-
 ball Student Manager 2; MOCCA-
 SIN PRINT 4.



JUDY KELLENBERGER
 "Judy" . . . dimples . . . sweet tom-
 boy . . . loves horses . . . tall and
 regal.
 WARRIOR 4.

JANET LANKFORD
 "Jan" . . . twinkling eyes . . . imp-
 ish grin . . . a pocket full of dreams.
 Glee Club 1,2,3,4; Mixed Chorus
 1,2,3,4; Red Peppers 1,2,3,4; WAR-
 RIOR 3,4; MOCCASIN PRINT 4;
 Class Play 3.



Seniors



LINDA LANKFORD
 "Lanky" . . . friends and fun . . .
 sweet and ambitious . . . nice to be
 around.
 Glee Club 3,4; MOCCASIN PRINT
 4; Student Council 4; Twirler 4.

BOBBY MARTIN
 "Boxer" . . . a mighty mite . . .
 big-hearted . . . respected . . .
 liked by all . . . good sport.
 Football 3,4; Track 3,4; Boxing
 2,3,4; Student Council 2; Class
 King 4.

LINDA MONTGOMERY
 "Monty" . . . a senior cutie . . . a
 serious manner hides her mischief.

MICHAEL MONTGOMERY
 "Mike" . . . silent type . . . a lone
 wolf . . . easy going .
 Red Peppers 3,4.

BARBARA OLEMAN
 "Barb" . . . full of sweetness and
 ambition . . . studious and reliable
 . . . never idle.
 Glee Club 1,2,3,4; Red Peppers
 1,2,3,4; Class Officer 4; WARRIOR
 3,4; MOCCASIN PRINT 4.





FREDALENE PIERCE
 "Sue" . . . if you knew Susie like we
 know Susie . . . pert . . . petite.
 Glee Club 1,2,3,4; MOCCASIN
 PRINT 4.

CHESTER PITTMAN
 "Chet" . . . persistant nature . . .
 good sport . . . oh, that bass voice!
 Football 2; Basketball 3; Baseball
 3; Glee Club 1; Class Play 3.



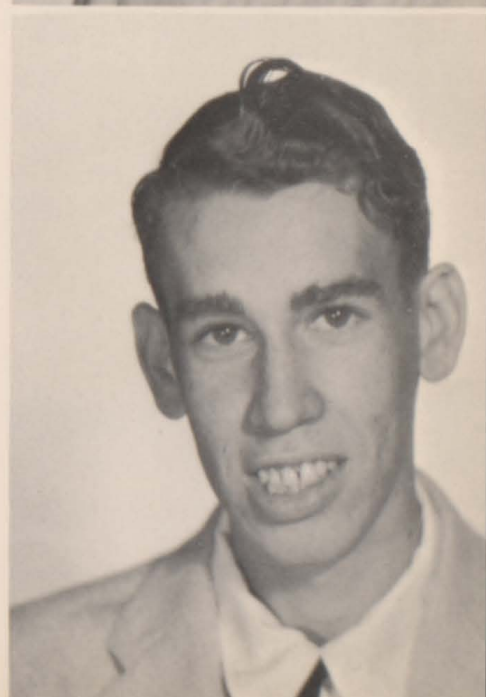
TOMMY POOR
 "Notepasser" . . . teasing Tom . . .
 class character . . . always willing
 to help . . . popular.
 Class Officer 1; Track 2,4; Foot-
 ball 4; Class Play 3.

ANNE POWERS
 "Annie" . . . a smile for all . . .
 combination of looks and brains . . .
 will go far.
 Librarian 3,4; MOCCASIN PRINT
 4; Red Peppers 4; F.T.A. 4.



DARREL REESE
 "D. R." . . . sturdy and genial per-
 sonality . . . relaxed . . . quiet . . .
 good judgement.

GERALD RHODES
 "Ger" . . . always leaves them laugh-
 ing . . . ready for fun . . . brown
 eyes.
 Mixed Chorus 3.





MAX ROARK
 "Maxie" . . . brains . . . quiet . . .
 likes sports . . . likeable.
 Class Officer 3; Student Council
 3; MOCCASIN PRINT 4; F.T.A. 4.



DANNY ROBERTS
 "Dan" . . . thoughtful . . . generous
 . . . deliberate . . . sure . . . friendly
 smile.



KEN ROGERS
 "Ken" . . . the president . . . ace in
 sports . . . leads the class in more
 ways than one.
 Class King 1; Student Council 1,4;
 Football 2,3,4; Basketball 2,3,4;
 Class President 4.



JUDY ROSIERE
 "Frenchie" . . . crowning glory of
 black hair . . . radiates generosity
 . . . a sweetie.
 Red Peppers 1,2,3,4; Band 1,2,3,4;
 Glee Club 1,2,3,4; WARRIOR 3,4;
 MOCCASIN PRINT 4; Class Play 3,
 Mixed Chorus 3,4; F.T.A. 4.



CAROLYN ROUTLEDGE
 "Caro" . . . friends and fun, her
 motto . . . blonde, frolicking cheer-
 leader.
 MOCCASIN PRINT 4; Student Coun-
 cil 2; Red Peppers 1,2,3,4; Cheer-
 leader 3,4; Class Officer 3; Foot-
 ball Queen 3; Miss Merry Christmas
 4.



CLIFFORD SKAGGS
 "Cliff" . . . enjoys friends and fun
 . . . always on the go . . . pleasant.
 Student Manager 4.

Seniors

BOB SMITH

"Smitty" . . . shy . . . determined . . . fun-loving . . . optimistic . . . polite and a good sport.
Class Officer 2; Student Council V.P. 3; Track 1,2,3,4; Football 3,4; Basketball 3,4; Class Play 3; Student Council 2; F.T.A. 4.

CLARENCE SNEED

"C. S." . . . always has an answer . . . pleasant ways . . . cooperative.

PATTI THOMAZIN

"Pat" . . . a tiny tidbit . . . full of mischief and fun . . . popular gal.
Glee Club 1,2,3,4; Red Peppers 1,2,3,4; Class Officer 1,4; Mixed Chorus 3,4; MOCCASIN PRINT Co-editor 4; Class Play 3.

DONNA TURNEY

"Dee" . . . always willing to lend a hand . . . serene and happy . . . soft spoken.
Glee Club 2,3,4; Red Peppers 4.

CONNIE VADER

"Christmas bride" . . . now is Mrs. Oscar Virgin . . . happy.
Student Council 1; Band 2,3,4; Red Peppers 1,2,4; F.H.A. 1; Nurses' Club 2.

DONNA HAYES,

Football Queen Attendant



Anderson, Nancy



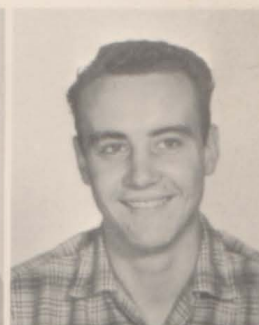
Anderson, Joyce

Baldwin, Jim

Brizendine, Vicky

Burkhart, Darrel

Calloway, Gary



One More Year on the Reservation Left for the Juniors

Last fall the juniors realized they were no longer papooses. They're now almost at the top, and anxious to get there.

Their play, "Adam's Evening," and the formal junior-senior banquet highlighted this year for them.

Barbara Heistand, president; Linda Sowersby, secretary-treasurer; Ronnie Testerman, vice-president.



Conduff, Tommy



Chapman, Lanea



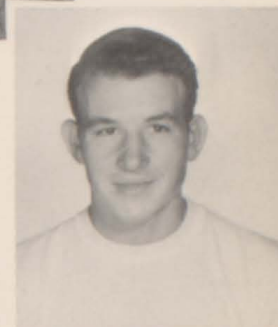
Clark, Nelson



Cole, Jerry



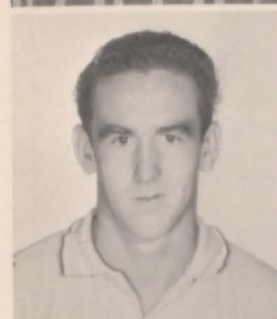
Conduff, Royce



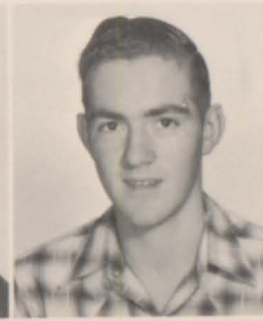
Cook, Eugene



Cooper, Bonnie
Cox, Sharon
Cupp, Patsy
Curry, Brian



DeMasters, David
Dinwiddie, Donald
Divine, Mary Ellen
Dousette, Tony



Durbin, Karen
Elbert, Frances
Ellis, Larry
Farmer, Tommy



Flaherty, Peggy
Forrest, Virginia
Foster, Deanna
Gaston, Calvin



Gilman, Mary
Griffin, Lillie
Griner, Christine
Hall, Harvey



Hall, Lee
Harding, Paul
Hartzler, Johnny
Hayes, Janice



Heistand, Barbara
Hembree, Gene
Hirsch, Quinton
Howard, Bob



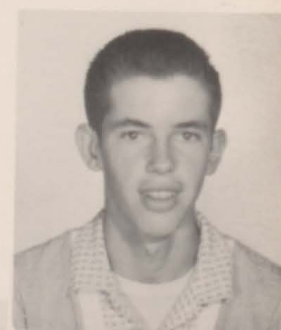
John, Raymond
Johnson, Marvin
King, Judy
Kittrell, Bill



Lagers, Deloris
Lagers, Shirley
Lais, Joyce
Lewis, David



Margerum, Johnnie
Marney, Alice
McNary, Charles
Millard, Steven



Mills, Lillie

Nutting, Joyce

Oleman, Karen

Oxford, J. W.

Pence, Barbara



Reed, Ronald
Rickard, Linda
Ritter, Beulah
Ritter, Kenneth



Ritter, Sharon
Rogers, Terry
Sanders, Sam
Scherer, Carol



Sherwood, Etta
Shipp, Doris
Snider, David
Sowersby, Linda



Sparks, Gary
Taylor, Georgia
Taylor, Joyce
Testerman, Ronnie



Triplett, Sue
Tucker, Patricia



Vowels, Mike



Wallen, Darrel

Wilson, James

Barbara Heistand, Junior Football Queen
Attendant.

Walden, Dick



Arnold, Mildred



Adams, Jake

Allgood, Patty

Anderson, Russell

Arnold, Barbara



Barnes, Larry



Bates, Darlene
Beavers, Barbara
Bettis, Nancy
Boman, Sharon

Sophomores Grow up in the Tribe

The sophomores by now have learned most of the habits and customs of S.H.S. Testing their knowledge and skills in various ways this year in both classes and

extra-curricular activities, they are well on their way to becoming upperclass tribesmen.

Loretta Golden, secretary-treasurer; Cheryl Pierce, president; Randol Macon, vice-president.





Brecht, Mary



Brattin, Shirley



Brown, Jerry



Buck, Danny

Jan Hottel, sophomore, Football Queen.



Carlisle, Treva
Clemons, Phillip



Clouse, Carl
Conduff, Rayma
Cook, Jerry
Cooper, Sally



Cory, LaVerl
Cox, Johnnie
Crain, Lawrence
Davis, Charles



Eddings, Bevelyn
Erwin, Linda
Ferguson, Mary
Gaston, George



Gilstrap, Jerry
Gilstrap, Robert
Golden, Loretta
Anna Grant



Graves, David
Gunlock, Virginia
Harbison, Forest
Hembree, Edna



Hembree, Gloria
Henson, Terry
Hoffman, Arthur
Hoke, Carol



Hoover, Carolyn
Hottel, Jan
Isbell, John
Kingfisher, Sylvia



Laughlin, Bob
Macon, Randol
Mailes, Aleta
Mailes, Lenny



Mathre, Evelyn
McGehee, Roberta
McKee, Donna
Mittag, Lonnie



Moffett, Mary



Moore, Dean

Moore, Evelyn

Morgan, Jim

Moss, Dorothy

Montgomery, Rosemary





O'Dell, Paulette
Osborne, Frankie
Owens, Linda
Pierce, Cheryl



Platner, Quinton
Poole, Foster
Ridenour, Arlene
Rinehart, Connie



Rinehart, Susann
Ritter, Larry
Rosiere, Ronnie
Ruddick, Dorothy



Sherer, Shira
Souder, Jessie
Sparks, Janet
Sparks, Linda



Strait, Linda
Trease, Eddie
Turney, Carolyn
Watkins, Jack

Yocum, Sara



Whitehead, Ricky

Wilfley, Lyndia

Wilkins, Otis

Wilson, Max

Worley, Karen





Anderson, Gary



Adams, Rachel

Anderson, Phyllis

Arnold, Betty

Arnold, Beverly

Balls, Shirley



Beavers, Loretta
Boman, Nina
Brady, Jim
Brown, Donnetta



Newest Tribesmen Are the Freshmen

Freshmen came this year from many tribes-- Westview, Thompson Grove, Hickory Grove, Spring City, and many others--to unite in the tribe of

Seneca High School Indians. In fact, one hundred eleven of them enrolled and are expected to win many new honors for S.H.S.

Kay Ehrhart, president; Donald Connell, vice-president; Judy McReynolds, secretary-treasurer.



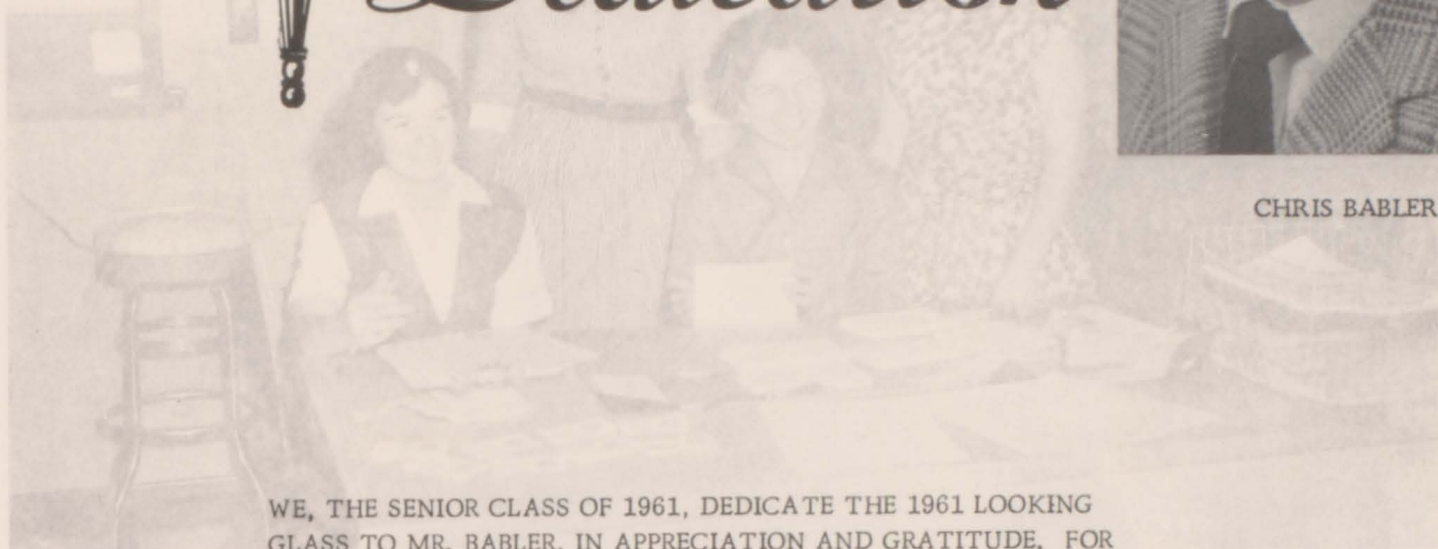
OFFICE & LIBRARY HELPERS



Dedication



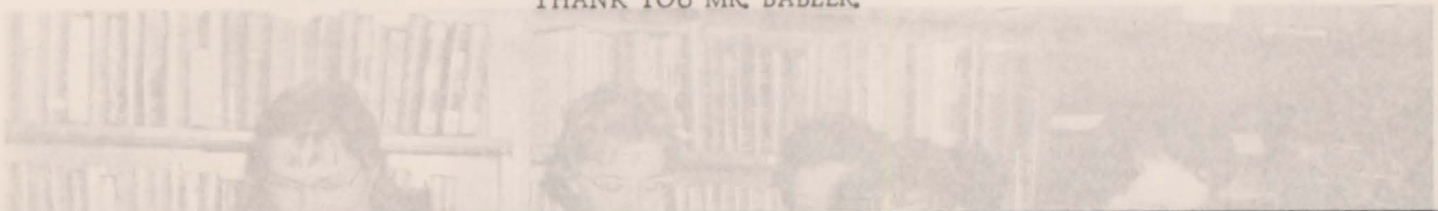
CHRIS BABLER



WE, THE SENIOR CLASS OF 1961, DEDICATE THE 1961 LOOKING GLASS TO MR. BABLER, IN APPRECIATION AND GRATITUDE. FOR THREE YEARS, HE HAS UNSELFISHLY DEVOTED HIS TIME AND EFFORTS TO OUR CLASS AS OUR CLASS ADVISOR, TEACHER, COACH, AND FRIEND OF THE STUDENTS.

OFFICE HELP: Sandra LaPrade, Secretary, Sandra LaPrade, Registrar, Sandra LaPrade.

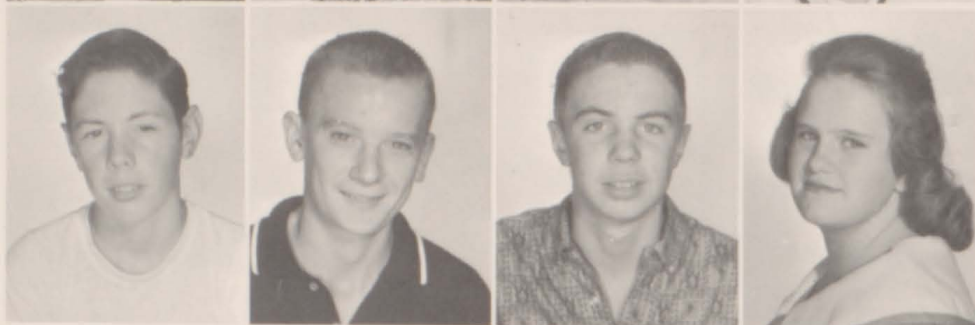
THANK YOU MR. BABLER.



LIBRARY HELP: Sandra LaPrade, Secretary, Sandra LaPrade, Registrar, Sandra LaPrade.
Sitting, Mary Turner



Fink, Shannon
Fox, Donna
Fredenburg, Leasa
Gaston, Leon



Gates, Jay Dee
Gaw, Jerry
Golden, Howard
Golden, Janice



Graves, Linda
Green, Linda
Hayes, Janna
Hembree, Bobby



Hembree, Laura
Hines, Sally
Hoff, Mary
Howard, Billy



Donna Fox, Freshman Football
Queen Attendant.



Huffman, John
Hutchison, Beverly



Isbell, Ben

Jones, Clara



Kyle, Joe

King, George



Lankford, Carolyn
Lankford, Joe
Lankford, Patricia
Lankford, Ruth



Lawson, Morris
Livingston, Larry
Margerum, Jerry
McGehee, Janice



McReynolds, Judy
Miller, Arvin
Moore, Marcella
Morgan, Sue



Musgrave, Mary
Nothnagel, James
Nutting, Robert
Oleman, Donna



Parmley, Barbara
Pence, John
Price, Don
Price, Nina



Reding, Sherry



Renfro, Grover

Roark, Robert

Robinson, Elvin

Ruddick, Jane

Reed, Twyla





Mrs. FERN AUSTIN
Kindergarten

Mrs. ROBERTA MILLER
YEA WHI First Grade

Mrs. BARBARA VAN VELSOR
First Grade

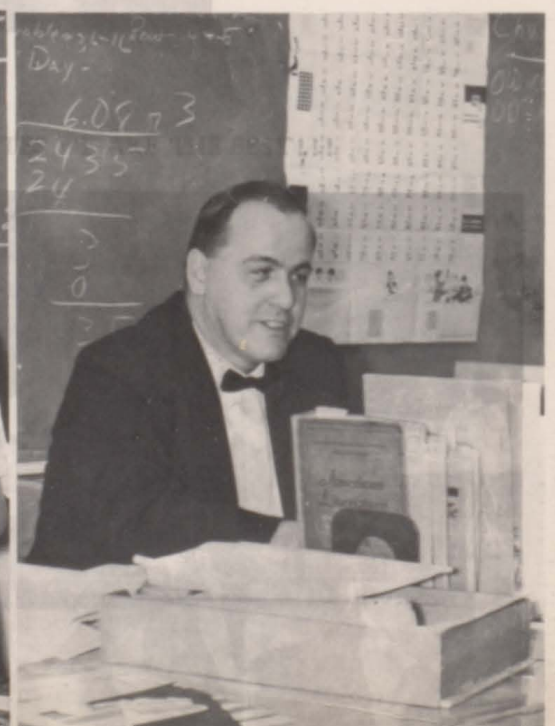
Mrs. RUTH WESNER
Special Education

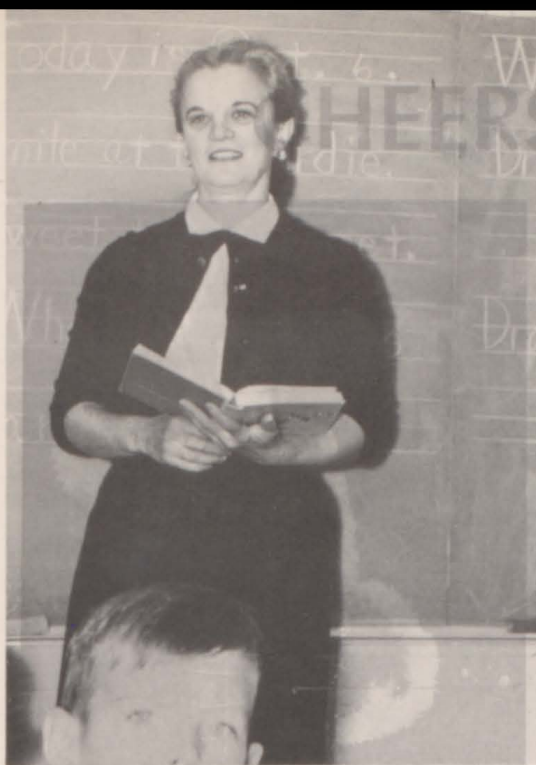
Mrs. MARILYN DENNIS
Fourth Grade

Mrs. MARGUERITE SMITH
Fourth Grade

Elementary

Mr. REO D. MILLER
Fifth Grade





Mrs. ELIZABETH CRIBBS
Second Grade



Mrs. ANN McDOUGALL
Third Grade



Mrs. MARION ACKER
Third Grade



Mrs. VERA CLARK
Special Education

Faculty

SHARON BURGOYNE--Varsity

Mr. FORREST STOLL
Sixth Grade

Mrs. BARBARA BAUMGARTNER
Fifth Grade

Mrs. HELEN CORP
Sixth Grade

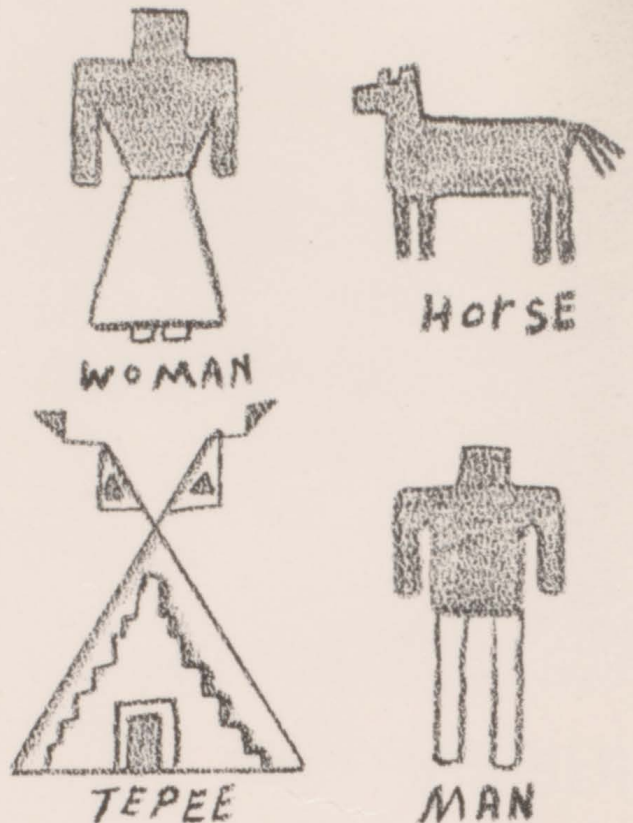


Indians Master Basic Tools of Communication

Sometimes there may have been a war whoop or two because the assignments were long or another theme was due, but most students still enjoyed learning to express themselves orally and in writing.

Spanish I students kept hoping for the opportunity to take the second-year course in this language next year, for they realize the potential value of being able to understand others.

Instructors in this department were Mr. Elliott, Mrs. Gilbert, Mr. Gallup, and Mr. Servis.



Karen Oleman, Diane Whitehead, Mr. Gallup, Frances Elbert.





Mrs. Gilbert and one of her three sections of sophomore English.

The photographer caught these boys rehearsing a play in Mr. Servis' 3rd hour dramatics class: David Snider, Richard Conner, Charles Hoff, Nelson Clark, Terry Anderson, and Chester Pittman.





R1: Steven Ketchum, Jeff Smith, Jon Baldwin, Charles Brock, Robert Cramer, Orion McKee, Raymond Bates, Neil Allen, Arnold Grove, Robert Tisch. R2: Jancie Guenther, Mary Beth Powers, Carolyn Morley, Mary Ann Caswell, Leona Curtis, Lou Ann Coe, Sue Jones, Valerie Rueckert, Sheryl Babler, Kathryn Baumgrass. R3: LaVern Stirm, Robert Hutchings, John Hurst, Emilee Hunt, Rebecca Lance, Laurie Bates, Sally Dedic, Charles Ordiway, George Gates, Tom Flynn, Mrs. VanVelsor.

First Grade

Second Grade

R1: Terry Good, Ricky Johnson, Delbert Magner, Albert Bigford, Eddie Jackson, Frank Suggate, Timothy Belbeck, Gerald Bennett, Gary Morgan, Michael Bates, Walter Willard. R2: Linda Stauffer, Rose Mary Holecek, Rose Marie Wurm, Elaine Sherman, Patti Hauser, Ruby Cook, Therese Hunt, Karen Arthur, Barbara Ferrigan, Susan Gregory, Patty Brandt, Penny Schultz. R3: John Wynstra, Dale Schray, Michael Rann, Marjorie Hutchings, Joan Wessell, Elonda Curtis, Susan Perrien, Robert Dowell, Douglas Smith, Davy Hewitt, David Walters, Mrs. Cribbs.





R1: Richard Veith, Donald Sherman, Joe McConnell, Arthur Ordiway, Jeff Austin, Roger Holcomb, Gary Bishop.
 R2: Cathy Hagerty, Cynthia Coe, Karen Elrod, Susan Gee, Kristen Cortright, Linda Argensinger, Rosemary Ferrigan, Mrs. McDougall. R3: Tom Swarthout, David Guenther, Kenneth Stirm, Deborah Lance, Jeannie Davidson, Jacquelyn Rosen, Beatrice Perry, Ronald Strouse, Michael Stinson. Absent: Sherry Hewitt.

Third Grade

R1: Bernie Cook, Dick Rowley, Delman Smith, Bruce Caswell, Steven Swarthout, Marty Hurst, David Parsons, Eddie Fender. R2: Mary Jane Dunn, Vickie Putnam, Sue Ann Gleason, Leteshia Holcomb, Debra Lane, Sherry Guenther, Sherry Ketchum, Diane Harris. R3: Jim Hurley, Debbie Babler, Ruth Scott, Barbara Arthur, Betsy Tisch, Susan Fry, Nancy Allen, Karen McDougall, Mrs. Acker.





Mrs. Wells gives a problem to Algebra I students at the board: Wayne Bryant, Janna Hayes, Patricia Lankford, Sandra Stevens.

More Math Training Needed

Many a pow wow was held in algebra, general math, geometry, and advanced algebra classes; but students were interested and

knew the time was well spent. Trigonometry was offered the second semester.

Mr. Record was the instructor of advanced mathematics this year.





Mike Montgomery and Darrel Wallen are supervised by Mr. Jones in an experiment before the physical science class.

Talented Scientists Sought

General science, biology, physical science, and chemistry took much time and studying; and the department was operating under some what of a

handicap without a lab most of the year. Students look forward to full-time use of their new facilities next year.

Mr. Reid points out the characteristics of a bull snake specimen to Jan Hottel and Jerry Brown.



GLENDALE PIRATE



R1: David Bramen, Terry Thomas, Ronnie Bradfield, Allen Chadwick, Danny Magner, Aaron Bishop, Jerry Rustad, Howard Sherman, Douglas Austin, Howard Pierce. R2: Joanne Ferrigan, Vicki Johnson, Marie Fender, Jane Divine, Gail Smith, Betty Arthur, Terry Hagerty, Susan Ketchum, Patty Leland, Brenda Argensinger, Bonnie Mendoskin. R3: Jim Coleman, Dennis Hileman, Janet Hawk, Bette Jo Edmonds, Doris Snyder, Suzanne Hart, Cathy McGoran, Peggy Winnie, Donna Wolfrom, Nancy Swarthout, Larry Wellman, Bill Nash, Mrs. Corp.

VARSITY, STANDING L. to R.: Jack Berlin, Don Swinney, Allen, Dennis Crews, Joe Fisher, Coach, Mr. Gibson. KNEELING: Jim Bowen, Charles Fox, Mike Vaughn, Roger Lee. NOT PICTURED, Charles Fox.

Sixth Grade

R1: Billy Potter, David Klockyiem, Jim Wesner, Tim Good, Jerry Lupien, David Mitchell, Mike McCorkle, David Baumgras, Craig Bradfield, Robert Brown, Robert Ordiway. R2: Pauletta Donley, Carol Hart, Virginia Sawyer, Pat McGoren, Frances Kurkoskie, Joan Hutchings, Carol Hurley, Cathy Tisch, Carole Rann, Kathy Poole, Christie McDougall, Mr. Stoll. R3: Ronnie Holcomb, Richard Mendoskin, Jimmy Gleason, Bill Wessell, Harold Hallock, Bruce Duff, Gerry Sparkes, Susan Coe, Charles Ruechert, Dan Jorae, Max Smith, Frank Swarthout, John Lance, Dennis Norstraut. Absent: Kathy Churchill, Marjorie Turner.



Glendale--5
Glendale--49
Glendale--60
Glendale--58
Glendale--74

HOOPSTERS — 1951 — HIGH SCHOOL



-Douglas
41--Riddle
62--Myrtle Creek
45--Oakland
41--Glide
64--Sutherland
58--Douglas
54--Riddle
46--Myrtle
41--Glide
64--Sutherland

Farwick W... Yoda
Arum... KN...
Joe Tur... Swart...



Mr. Elliott, director, has worked hard with this snappy looking group, and they in turn worked hard to be good tribal music makers. They marched in the Joplin and

Neosho parades at Christmastime, as well as appearing at a number of assemblies and special occasions.

At right: Linda Brown, drum majorette; Donna Hayes, head twirler; Margaret Bryant, Linda Lankford.

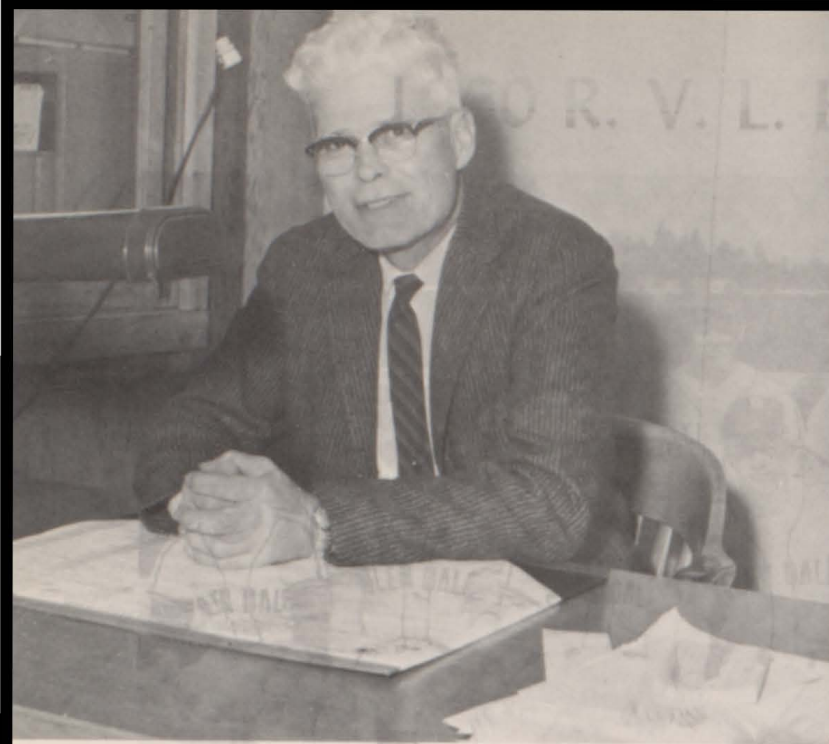


Strike Up the Band!

FIRST ROW: Carolyn Darr, Judy Rosiere, Barbara Pence, Susann Rinehart, Cheryl Pierce, Joyce Lais, Shirley Brattin, Twyla Bennett, David Claycomb, Joe Kupchin, Randy Fritchey, Charlotte Rosiere, Donna Fox, Carol Ann Coburn, Charleen Smith, Dennis Steele. SECOND ROW: Kay Ehrhart, Melinda Tucker, Shirley Dunbar, Beverly Link, Janet Strait, Dennis Crabtree, Royce Conduff, Ronnie Rosiere, Shirley Black, Shira Sherer, John Pence, Barbara Heistand, Jan Hotel, Sue Morgan, Connie Vader, Sharon Stoner, Thea White, Foster Poole, Linda Strait, Jim Brady. THIRD ROW: Treva Carlisle, Lynnetta Walker, Sara Yocum, Linda Lankford, Linda Brown, Donna Hayes, Margaret Bryant, Sylvia Kingfisher, Aleta Mailes, Mr. Elliott.

Below: Treva Carlisle, Lynnetta Walker, Sara Yocum, Sylvia Kingfisher, Aleta Mailes.





MR. RAYMOND O. NASH
Principal



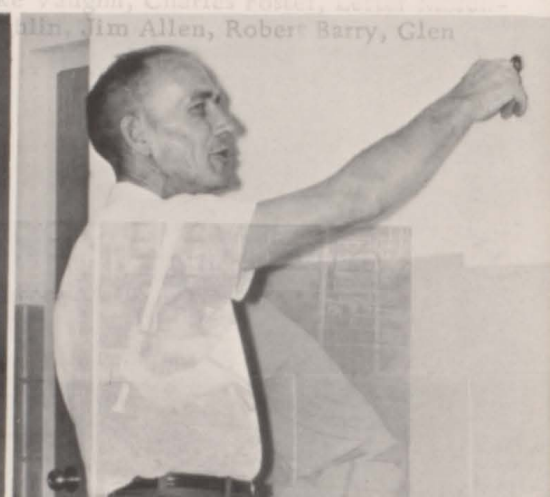
MRS. NORA GUENTHER
Secretary

Janitors

ORION BOHNETT

HARVEY WALTERS

HARRY GRAY



Bus Drivers

CARL BURKE

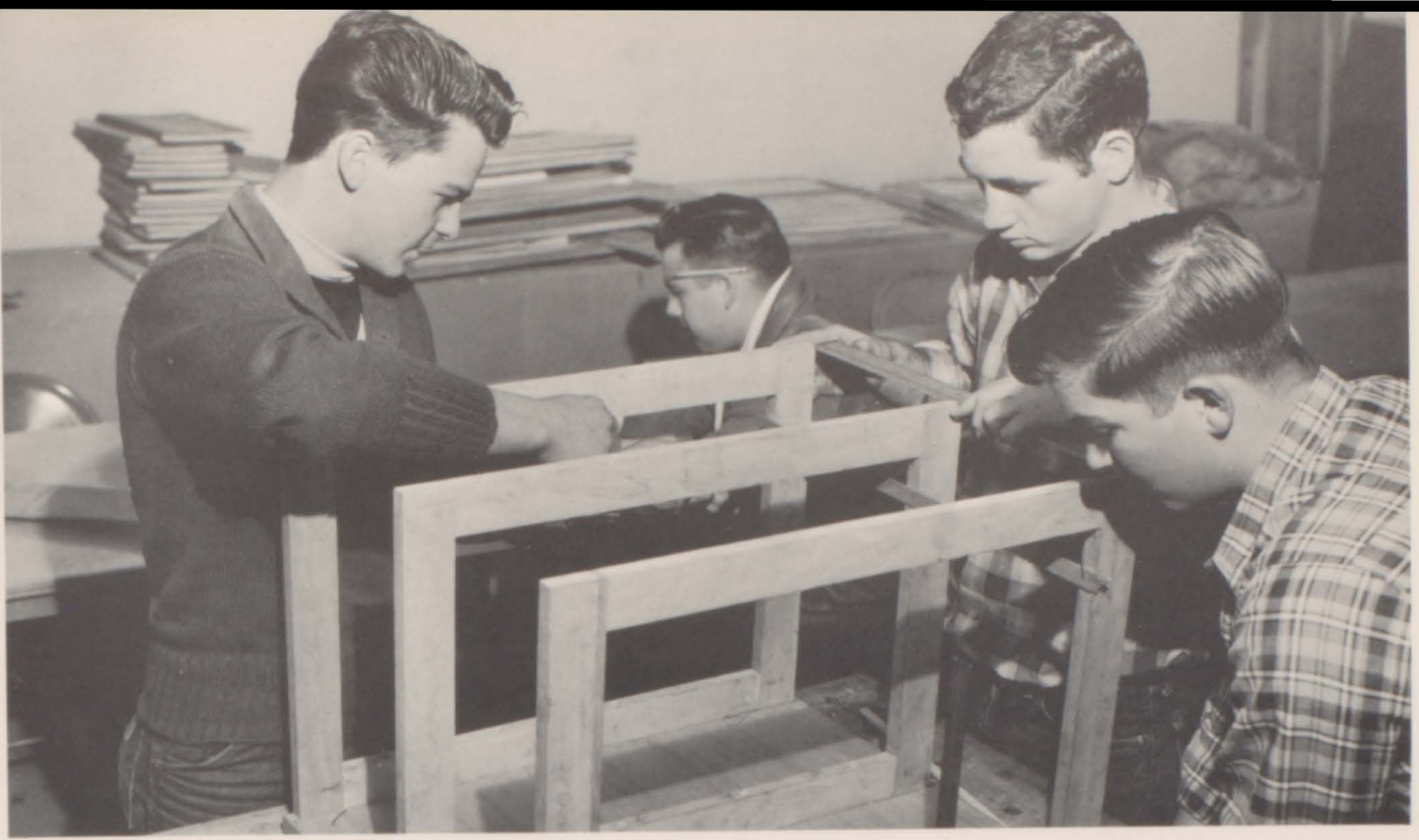
ALTON WATSON

ROBERT ALLEN

MONTY McLAUGHLIN

HARRY GRAY, PETE PUTNAM, PER BLACKLEDGE, VERNON CLARK, HARVEY WALTERS, ORION BOHNETT





Donald Dinwiddie, Ronald Reed, Arno Graves, and Sam Sanders work on a project.

Woodworking Becomes an Art

Still occupying the basement of the high school building, the shop classes nevertheless were interesting, and many worthwhile projects were completed by the Indian braves.

Many of the freshman boys were enrolled in Industrial Arts I this year as a fifth subject, and most of them plan to continue next year.

Hard at work are Steven Millard, James Wilson, Richard Conner, Mr. Maben, and Kenneth Ritter.





Mr. Longenbaugh, Vicky Brizendine, Sharon Ritter, Calvin Gaston, Mr. Fowler, Foster Poole.

Instruction Produces Better Drivers

Courteous, alert, and intelligent drivers are essential for safety; and instruction obtained in drivers training class will help students become more pro-

ficient behind the wheel of a car. The car for this class was furnished through the courtesy of Longenbaugh Ford Motors.

Indians Strive

Doris Shipp, Carol Coburn, Donna Hayes, Donna Fox, Lillie Mills, Sally Hines.





Mrs. McCracken and Joanne Stevens discuss Joanne's profile of I.T.E.D. scores.

Each Tribesman Plans His Future

Through the guidance and counseling program of the tribe, a one-to-one relationship with the counselor is encouraged in order that each student may be assisted with his unique problem. Mrs.

McCracken, counselor, has helped many of them find their particular spot in the world of colleges and jobs.

for Physical Fitness

L. Sowersby, D. Turney, L. Lankford.

Learning the rules of good sportsmanship, working off excess energy, and taking healthful exercise were among the apparent reasons for the noisy enthusiasm of braves and maidens during physical ed. classes.

It was fun for the girls to wear "jeans" and play twice a week. In fact, never let it be said that the maidens of S.H.S. are dull; you should have seen their wild basketball games.

Cares are forgotten, and everything goes into the game.





Sydnia Fleetwood, Steve Harryman, Janice Cook, Royce Conduff.

Activities and Athletics

As the years passed, other bands or remnants of tribes united with the Senecas, so that they came to include people of the Erie, Conestoga, Cayuga, Oneida, Mohawk, Onondaga, Tuscarora, and Wyandot. A total of 352 Seneca of Sandusky (including Cayuga, etc.) arrived from Ohio in the summer of 1832, and an enumeration at the close of 1832 showed 275 at their new location on the Cowskin River.

All area residents are familiar with The Green Corn Feast, with its ceremonials and dances, which is held by the Seneca-Cayuga on an announced date each summer, usually at Turkey Ford on the Cowskin River, near the Ottawa-Delaware County line in Oklahoma.





FIRST ROW: Sydnia Fleetwood, Linda Bennett, Judy Rosiere, Twyla Bennett, Patti Thomazin, Shirley Black. SECOND ROW: Janet Lankford, Carolyn Darr, Marilyn Blatter, Donna Gunlock, Donna Hayes, Shirley Brady, Barbara Oleman, Anne Powers, Linda Brown, Mary E. Glover, Janice Cook, Carolyn Routledge. THIRD ROW: Max Roark, Linda Lankford, Sue Pierce, Margaret Bryant, Evelyn Huffman, Gwendolyn Green, Deloris Drake, Mark King.

Copy Ready? Another

Although to the MOCCASIN PRINT staff it seemed they were always just a jump behind, the paper was always delivered on time. They

sincerely hope you enjoyed each issue as much as they enjoyed publishing it.



Janet Lankford, art editor; Patti Thomazin and Shirley Black, co-editors.



FIRST ROW: Janet Lankford, Linda Bennett, Sydnia Fleetwood, Shirley Black, Carolyn Darr, Barbara Oleman, Judy Rosiere. SECOND ROW: Joyce Lais, Sharon Ritter, Barbara Pence, Lillie Mills, Barbara Heistand, Mary Gilman, Nancy Anderson. Not pictured: Judy Kellenberger, associate student artist.

Deadline to Meet!

How do you like your 1961 WARRIOR? The staff was never scalped for missing a deadline, but sometimes they came very close. Now the

book is finished, and you see the results. Hope you like it!

Sydnia Fleetwood and Linda Bennett, co-editors; Mary Gilman, assistant to the editors.





FIRST ROW: C. Routledge, L. Bennett, D. Gunlock, B. Heistand, J. Cook, S. Brattin. SECOND ROW: B. Hutchison, P. Lankford, J. Hayes, P. Sherwood, M. Hoff, S. Cooper, J. Hottel, B. Oleman, D. Whitehead, D. Hayes, J. Rosiere, S. Fleetwood, L. Graves, D. Oleman. THIRD ROW: C. Sherer, L. Mills, L. Sowersby, D. Shipp, K. Oleman, R. Walker, C. Anderson, L. Fredenburg, B. Brown, C. Rinehart, A. Mailes, L. Walker. FOURTH ROW: M. Gilman, S. Cox, S. Rinehart, C. Pierce, K. Ehrhart, D. Fox, C. Coburn, S. Balls, W. Daniels, L. Strait, S. Stoner, R. Montgomery, A. Ridenour, B. Eddings. FIFTH ROW: J. Stevens, S. Sherer, C. Darr, T. White, J. Lais, T. Carlisle, B. Pence, D. McKee, L. Golden, B. Martin, T. Poor, E. Robinson. SIXTH ROW: Mrs. Brown, L. Mittag, T. Conduff, L. Barnes, C. Pittman, L. Hall, D. Graves, R. Rosiere, C. Davis, S. Brady, T. Bennett, J. Lankford, A. Powers, P. Thomazin, D. Turney, S. Whitehead, J. McReynolds, Mr. Gallup.



Red Peppers Faithful in Suport of Team

While the Seneca Indians fought with true school spirit and bravery, they were faithfully backed and boosted on to victory by the pep club, loyal braves and maidens dressed in red and white.

Officers were Jan Hottel, president;

Barbara Oleman, vice-president; and Sally Cooper, secretary-treasurer.

A busload of these ardent fans attended almost every out-of-town game, and a large group was always on hand for yelling at the home games.

The Girls Behind the Boys . . .

"One little, two little, three little Indians; four little, five little, six little Indians . . ."
Win or lose, the war chants of the cheerleaders always spurred our

Warriors on.

Selected the first week of school, these peppy girls were assisted throughout football season by one boy, Nelson Clark.

Carolyn Routledge, Linda Bennett, Donna Gunlock, Barbara Heistand, Janice Cook, and Shirley Brattin.





Math Club Forms

SEATED: S. Rinehart, C. Pierce, D. Graves, R. Macon, N. Clark, L. Hall. STANDING: L. Barnes, T. Dousette, D. Snider, F. Elbert, L. Strait, L. Mailes, L. Ellis, R. Whitehead, G. Calloway, J. Watkins, R. Conduff.

Newly formed this year, this club's membership enjoyed delving deeper into the mysteries of mathematics. They met approximately

every two weeks with their chief, Mr. Record, who led them through new mathematical adventures.

Student Council Serves





F. T. A.'s Obtain Charter

SEATED: J. Rosiere, B. Howard, S. Fleetwood, C. Darr, S. Black, L. Bennett. STANDING: D. Gunlock, B. Smith, B. Brown, I. Ellis, B. Heistand, M. Roark, B. Ritter, B. Pence, A. Powers, T. Bennett.

Another new club, Future Teachers of America, was chartered Nov. 8, and started off by giving each high school teacher a big, red apple.

This band of sixteen Indians was counseled by Mrs. McCracken, and meetings were held each month.

Seneca Tribe

Left, SEATED: Ronnie Brattin, president; Barbara Heistand, secretary; Bob Howard, Ken Rogers, Linda Lankford, Jack Gilman, Cheryl Pierce, Ricky Whitehead, George King, Kay Ehrhart, Mike Vowels, Tony Dousette, Sally Cooper, Larry Cunningham. STANDING: Mr. Mhoon, adviser.

BELOW: Charles Davis, Sally Cooper, Max Roark, Larry Cunningham, Larry Ellis, Tommy Conduff.



To be a member of the Student Council, student governing body of S.H.S., is a coveted honor among tribesmen. This group handles the concession at sports events and sponsors tribal parties, as well as conducting others matters of business as needed.



Donna Hayes,
Senior

Barbara Heistand,
Junior



Football Queen

Jan Hottel

Attendants



Donna Fox,
Freshman



Indian Captain, Arno Graves, crowns Jan
Hottel, Football Queen of 1960.



Bobby Martin

Linda Bennett

Warrior Queen & Escort

Attendants

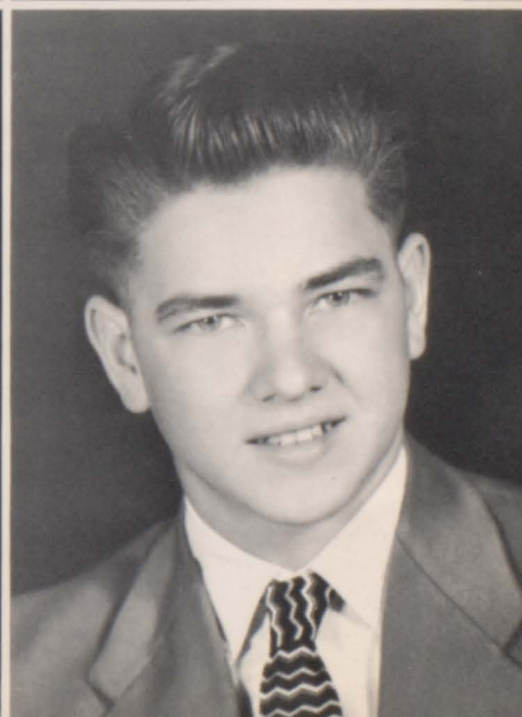
Joyce Nutting
Bob Howard
JUNIORS



Quinton Platner
Aleta Mailes
SOPHOMORES



Judy McReynolds
George King
FRESHMEN





SEATED: Alice Marney, Phillip Clemons, David Snider, Quinton Platner, Eddie Trease, Pat Carey, Barbara Beavers, Bevelyn Eddings, Sharon Carey. STANDING: Marilyn Blatter, Sue Triplett, Anne Powers, Brian Curry, Johnny Cox, Mrs. Gilbert.

Librarians Aid Learning

Besides checking out books and reference materials each period, the library staff kept the shelves in good order, traced lost books, and collected fines. Every few days they de-

picted another clever idea on their large bulletin board, thus promoting student use of library facilities.



Miss Merry Christmas

Nominated by the Student Council and elected by the student body, Carolyn represented Seneca High School in Joplin's annual Christmas parade.



Carolyn Routledge, Senior

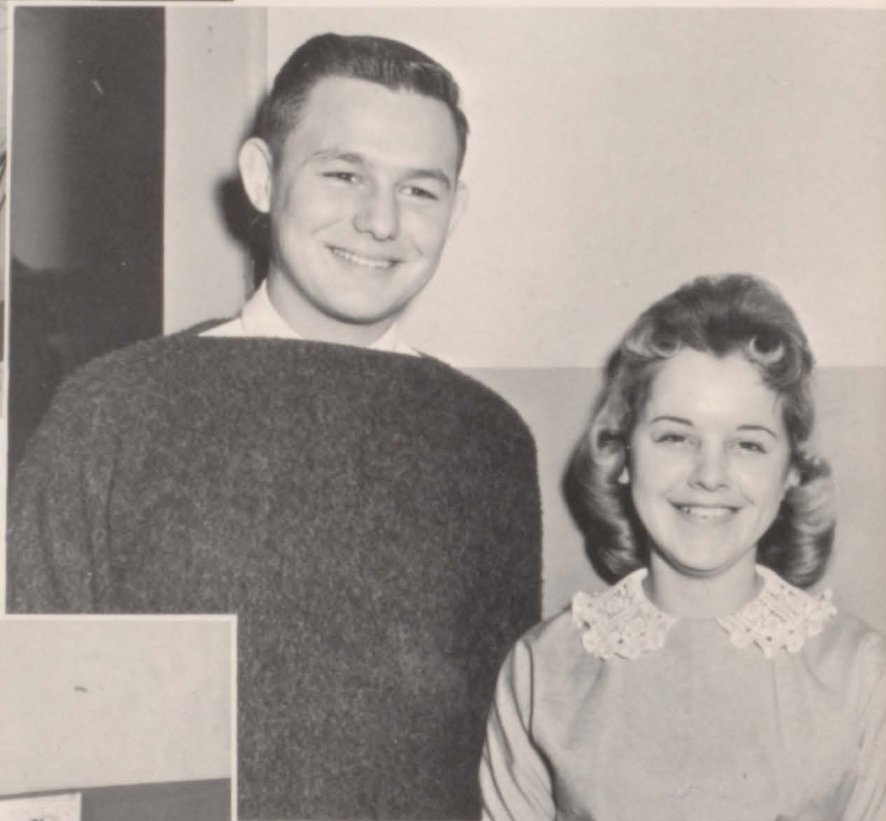
Students Assist in Offices

Assisting with the various clerical details of the principal's office were the girls at left: Beverly Brown, Sharon Cox, Margaret Bryant, Carol Hoke, Sue Pierce; and Mary Gilman, who helped out in the guidance office.

Indian Braves Listed in

Most Studious

Larry Barnes, Marilyn Blatter



Most Handsome & Prettiest

Ronnie Rosiere, Treva Carlisle

Best Groomed

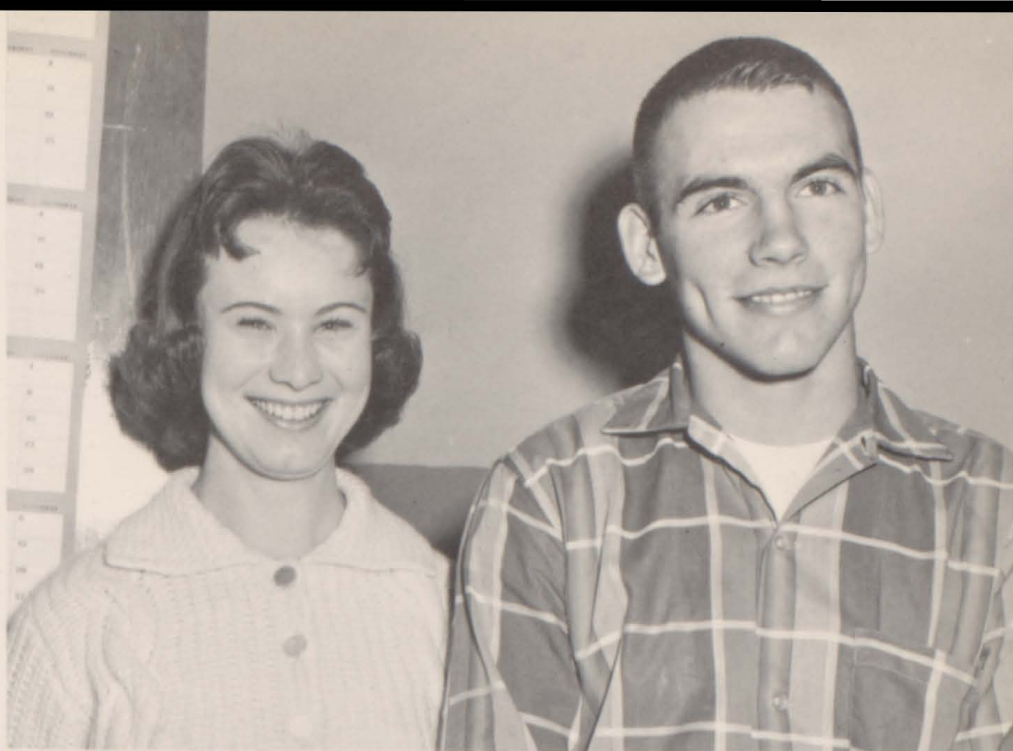
Ken Rogers, Carolyn Darr



and Maidens "Who's Who"

Most Friendly

Twyla Bennett, Quinton Hirsch



Most Likely to Succeed

Bob Smith, Shirley Black



Most Dignified

Jack Gilman, Barbara Pence



Most Popular

Carolyn Routledge, Terry Anderson



Cutest



Most Dependable

Max Roark, Shirley Brady

Most Athletic

Janet Lankford, Ronnie Brattin



Shirley Brattin, Bobby Martin

Most Polite

Donna Gunlock,
Quinton Platner





Best Personality

Sally Cooper, Bob
Howard

Senior Favorites

Mark King, Patti Thomazin



Sophomore Favorites

Johnny Cox, Aleta Mailes



Junior Favorites

Tony Dousette, Barbara Heistand



Freshmen Favorites

Larry Livingston, Twyla Reed



Director Tries First All-School Play

Something new was added this year; for instead of a senior play, an all-school play was presented in April. It was one of the major spring events.

"The Perfect Idiot," a 3-act farce, was presented under the direction of Mr. Servis; and the cast included eight seniors, five juniors and one sophomore.

It was a grand array of parts in a play that was full of laughs--Dan, the boy wonder, Larry Barnes; Dan's worried mother and father, Patti Thomazin

and David Snider; his younger brother, Tommy Conduff; the charming Linda, Judy Rosiere; her father, a school principal, Nelson Clark; the athletic Puff, Terry Anderson; his girl friend, Barbara Heistand; her high school friend, Carolyn Routledge; the philosophical colored maid, Pat Carey; the pompous soap manufacturer, Gary Calloway; a fussy teacher, Twyla Bennett; a policeman, Brian Curry; a newspaper reporter, Carolyn Darr; and a brain specialist, Max Roark.



FIRST ROW: Twyla Bennett, Patricia Carey, Judy Rosiere, Carolyn Routledge, Carolyn Darr. SECOND ROW: Gary Calloway, Brian Curry, Tommy Conduff, Barbara Heistand, Patti Thomazin. THIRD ROW: Mr. Servis, Max Roark, Larry Barnes, Nelson Clark, Terry Anderson, David Snider.



SEATED: Joyce Lais, Barbara Heistand, Larry Ellis, Mary Gilman, Gary Calloway. STANDING: Nelson Clark, Joyce Nutting, David Snider, Tommy Conduff, Bonnie Cooper.

Junior Thespians Entertain

On November 18 the juniors demonstrated their showmanship in their presentation of "Adam's Evening," an ingenious 3-act farce. Mr. Servis was the director.

The cast included Anxious Adam, Larry Ellis, himself; Adam's trusting little wife, Barbara Heistand, who could hardly believe the conclusions the typical mother-in-law, Joyce Lais, drew from Adam's adventures; two of the

laziest Negro servants that ever drifted across a scene, Nelson Clark and Joyce Nutting; beautiful Rosita and her jealous husband, Mary Gilman and Gary Calloway; the wildeyed nut who drove the taxi, David Snider; hard-boiled Mr. Cokes, Tommy Conduff, who didn't like getting a funeral wreath, and his extra hard-boiled wife, Bonnie Cooper.

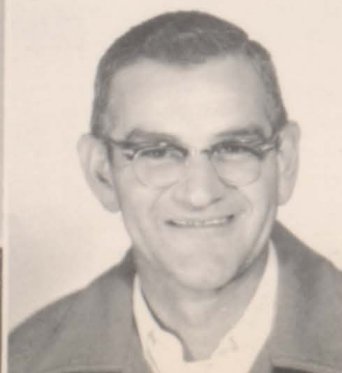
Indians Win First Conference Title Since 1957



KNEELING: A. Hoffman and L. Barnes, student managers. SECOND ROW: Mr. Jones, assistant to coaches; C. Pittman, LH; A. Graves, FB; M. Vowels, E; Q. Hirsch, G; R. Brattin, RH; B. Martin, E; D. Dinwiddie, G; Coach Fowler. THIRD ROW: B. Smith, FB; C. Hoff, T; S. Harryman, C; T. Poor, T; K. Rogers, T; G. Calloway, QB; T. Anderson, QB.

With Baxter Springs' victory over Galena in the final round of season play, Seneca was automatically in possession of second place in the Mo-Kan Conference.

Burl Fowler
Coach



Rod Reid, Asst. Coach

Bill Jones, Assistant to the Coaches

Seneca Takes Second in Mo-Kan Conference

1960 Schedule

"A" Team

WE		THEY
0	Aurora	35
41	Galena	21
0	Neosho	34
20	Cartersville	7
35	Carl Junction	0
6	Sarcoxie	41
41	Pierce City	26
7	Baxter Springs	35
0	Wyandotte	28
15	Jay	20

"B" Team

WE		THEY
0	Webb City	6
14	Wyandotte	20
19	Carl Junction	0
18	Wyandotte	6
19	Miami	42
30	Carl Junction	6
0	Galena	0
27	Baxter Springs	34



KNEELING: A. Hoffman and L. Barnes, student managers. SECOND ROW: Mr. Jones, assistant to the coaches; H. Hall, T; R. Testerman, QB; B. Howard, E; L. Mailes, E; R. Macon, QB; R. Whitehead, HB; L. Hall, C; Coach Fowler. THIRD ROW: D. Graves, G; J. Morgan, HB; B. Kittrell, G; B. Price, T; R. Rosiere, T; F. Poole, T; J. Cox, FB.

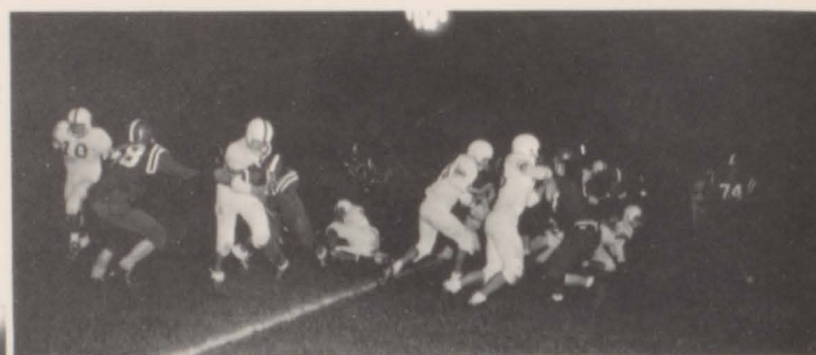


Earl Beavers, Tackle
Bob Smith, All-Conference
Fullback
Charles Hoff, Tackle



Tom Poor, Tackle
Bobby Martin, End

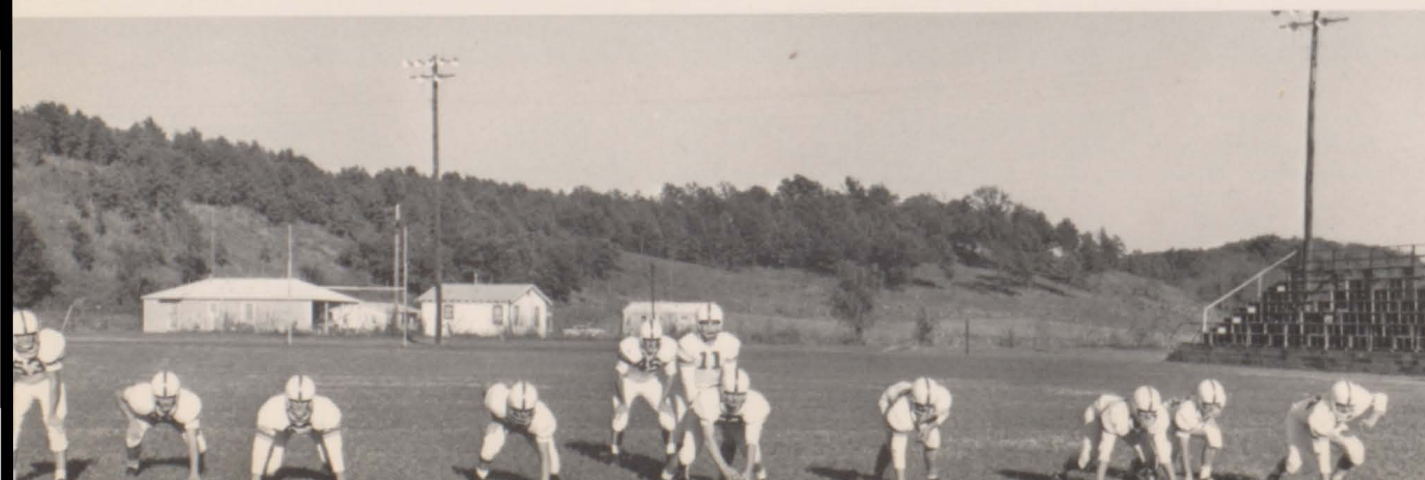
Seneca vs. Carl Junction, Oct. 7



Seneca vs. Neosho, Sept. 23



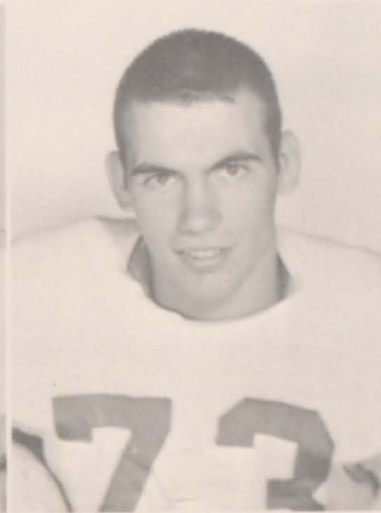
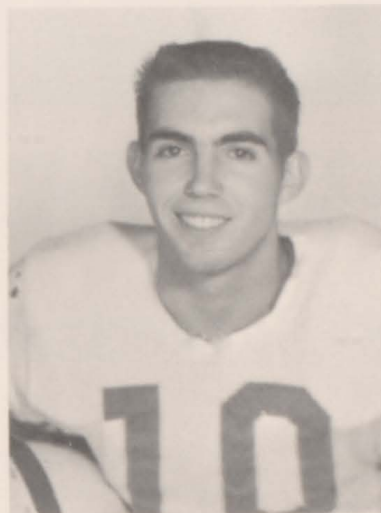
Split T formation, starting offense.



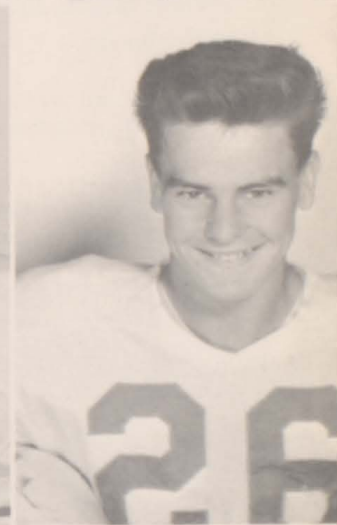
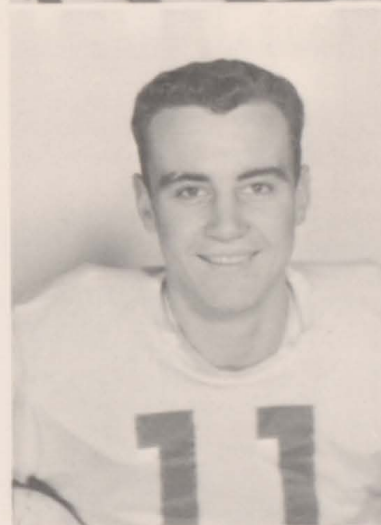


Split-T formation, alternate offense.

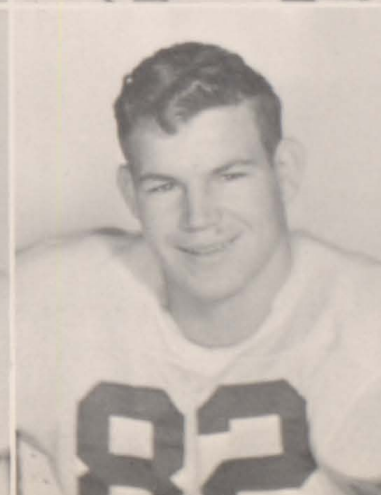
Terry Anderson, Quarterback,
All-Conference
Quinton Hirsch, Guard,
All-Conference
Ricky Whitehead, Halfback



Gary Calloway, Quarterback
Kenny Rogers, Tackle
Don Dinwiddie, Guard



Mike Vowels, End
Steve Harryman, Center,
All-Conference
David Graves, Guard





"A" Team

Coach Fowler, R. Testerman, G; T. Anderson, G; M. King, G; M. Lawson, G; L. Ellis, C; M. Vowels, F; B. Smith, F; K. Rogers, F; Coach Reid.

Indians Have Good Basketball Season

The braves who made up the basketball teams learned to work well together this year, playing several outstanding games, and defending well the tribal honor.

Returning lettermen, all seniors, were Anderson, K. Rogers, B. Smith, and King.

The boys worked hard, practicing several hours a day, including time after school.

"B" Team

Coach Reid; R. Macon, F; D. Moore, G; C. Davis, G; N. Clark, C; T. Rogers, C; G. Calloway, C; F. Poole, G; J. Watkins, F; J. Morgan, F; Coach Fowler.



1960-61 Basketball Schedule

WE	THEY
28 Wyandotte	46
46 Picher	69
WEBB CITY TOURNEY	
16 Neosho	46
35 Webb City	48
40 Lamar	55
29 Midway	46
NEOSHO TOURNEY	
43 Miami	54
36 Webb City	41
35 Carl Junction	37
38 Pierce City	48
40 Baxter Springs	55

WE	THEY
58 Sarcoxie	48
50 Galena	36
Carl Junction	
MO KAN TOURNEY	
Anderson	
Pierce City	
Baxter Springs	
Sarcoxie	
Wyandotte	
Galena	
REGIONAL TOURNEY	

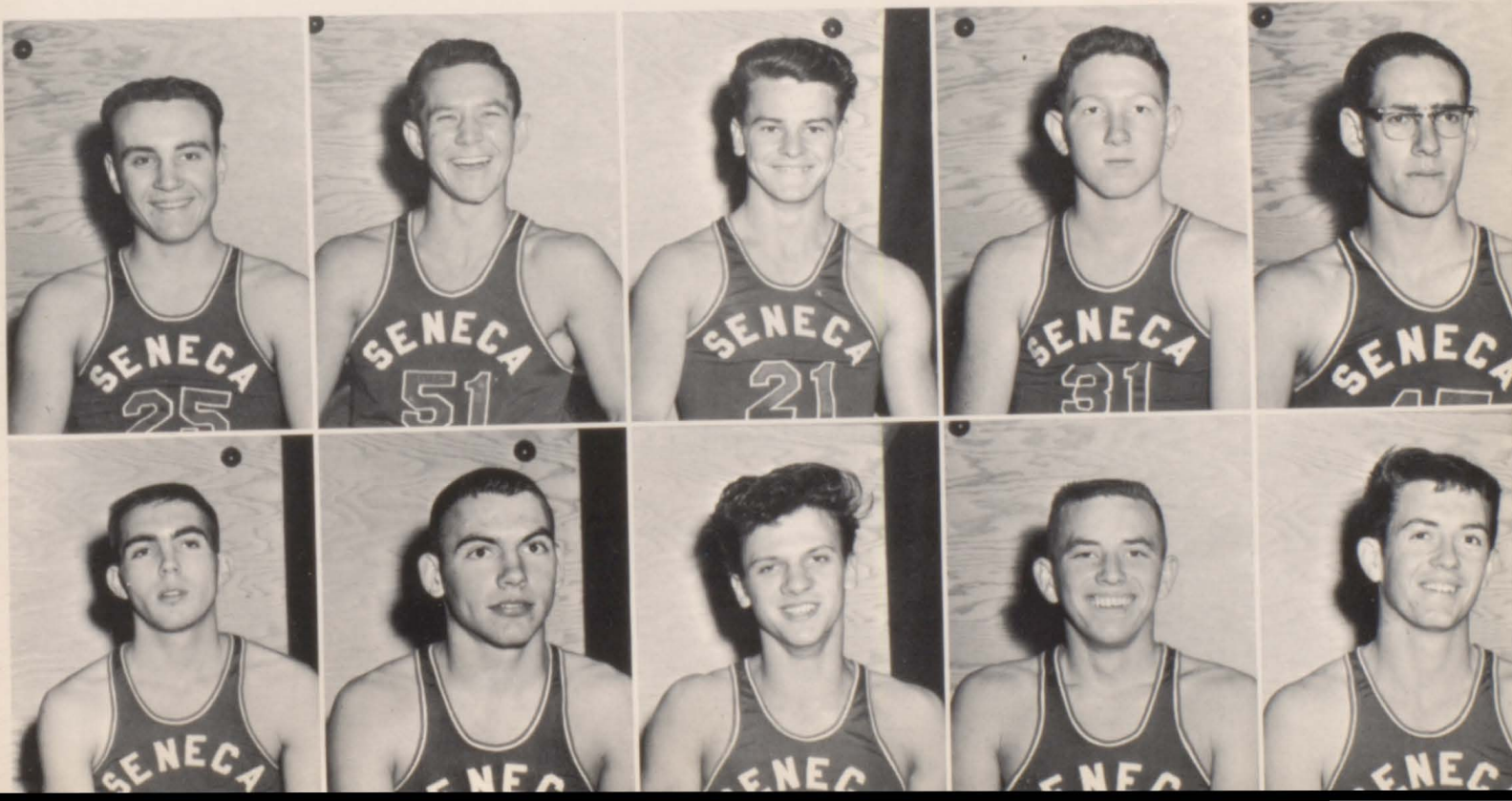
Track Popularity Grows

For several years now the trend has been toward track as the spring varsity sport; and in most schools the size of ours, track is replacing baseball.

A number of track meets were participated

in this spring by the Indians, including that of the Mo-Kan Conference at Baxter Springs in April. Pictured below are a few of the many boys who took part.

TOP ROW: G. Calloway, mile; B. Martin--mile, 440; D. Dinwiddie--pole vault, high and low hurdles; M. Vowels--mile relay, 440; B. Smith--mile, 880, 880 relay, B jump. BOTTOM ROW: T. Anderson, 440; Q. Hirsch--mile; T. Poor--440, 880, shot; B. Howard--880; J. Gilman--discus, shot.





Eager fans followed the Indians throughout football season.

Indian Lads and Lasses at Leisure

Aside from all the work and activities, there was always time for relaxation and leisure. Many friendships, and some of the most enduring ones, were made at times such as these.



Relaxing on the front steps was always fun.



Janice McGehee and Lynetta Walker



Dorene and Frances Elbert, Roberta McGehee, and Linda Testerman.



Most of the Indian maidens dressed up on the day of the Homecoming game, and their enthusiasm helped beat Carl Junction.



This is the way they looked behind.



Indian braves, Laverl Cory, Arno Graves, and Don Dinwiddie, await the game.

The student council concession added a lot to the fans' enjoyment at all games.





B. BRITE AGENCY
Judy Kellenberger and Beulah Ritter



THE CASUAL SHOP
Joanne Stevens and Ramona Walker



HOLCOMB'S PRODUCE
Gerald Rhodes and Darrel Reese



SILER'S WESTERN STORE
Larry Barnes and David Graves



FARMER'S EXCHANGE, INC.
Terry Anderson and Charles Hoff



PLUMMER AGENCY
Marilyn Blatter and Janet Lankford



SENECA LOCKER PLANT
Tommy Poor and Jerry Brecht



DORMAN'S DRUG STORE
Mary Moffett and Virginia Gunlock



STATE BANK OF SENECA
Connie Rinehart and Joanne Stevens



SENECA MATTRESS COMPANY
Jack Higginbotham and Ronnie Griffin



SENECA LUMBER COMPANY
Bob Smith and Quentin Platner



SPEED WASH
Nina Boman and Sara Yocum



SENECA GAS COMPANY
Shira Sherer and Thea White



SENECA TELEPHONE CO.
Virginia Gunlock and Mary Moffett



FRANCIS RADIO & TV
Wayne Bryant and John Pence



PLAYDIUM BOWL
Shirley Black and Janet Lankford



LONGENBAUGH FORD CO.
David Lewis and Paul Harding



SENECA NEWS DISPATCH
Tony Dousette and Bobby Price



SENECA APPLIANCE
Sally Hines and Janice Golden

VICKERS OIL CO.
Bobby Martin and Clifford Skaggs

SAVEX STATION
Lee Hall, Diane Whitehead, Doris Shipp, and Gerald Rhodes.



SENECA I. G. A.

SENECA CLEANERS

PR 6-5121

7th ST. MOTOR SERVICE

1401 West 7th St.

Joplin

GEORGE KOHLER & SONNY

FREDDY'S AUTO SUPPLY & BODY SHOP

Highway 10—off 43 West

Leroy Fredenburg

Seneca, Mo.

LEO J. DOOLEY

Local Agent



Seneca

Mo.

Roy Branham

E. P. Branham

BRANHAM CONSTRUCTION CO.

105 North Jefferson

Neosho, Missouri



COMPLIMENTS
OF

Seneca Dairy Queen

CHASE'S

Seneca

Mo.

BEAU GESTE BEAUTY SCHOOL

716 Main

Joplin, Mo.

MA 3-9426

STEVEN'S JEWELRY

BULOVA & ELGIN WATCHES

VIRGIL STEVENS

Balanced R Tread Recaps

"The Recap with Built-in Balance"

DARR TIRE SERVICE

Seneca

Mo.

Compliments of

Lindsay's Department Store

Seneca, Missouri

INTER CITY FLOWERS & GIFTS

112-114 West Sixth
Joplin, Mo.

Flowers & Gifts of Distinction

HAL E. SMITH

VELMA SMITH

MA 4-5510

MARDICK FURNITURE & APPLIANCE CO.

PHILCO

312 Virginia

Joplin, Mo.

JOPLIN GLOBE PUBLISHING CO.

Joplin, Mo.

CLOVERLEAF DAIRY CO.

Dependable "Home" Service
With the "Finest" of Dairy Products
for over 40 Years

Ph. MA 4-3448

1302 Joplin

McClintock Markets



Number One
116 N. Jefferson

NEOSHO

Number Two
813 W. Harmony

JOHN H. REEDER

WARREN Z. IRISH

Tick-O-Time Jewelry

"Always the Best Prices in Diamonds"

710-A Main Street

Joplin, Mo.



501 Tyler Street

Joplin, Mo.

JOPLIN FURNITURE CO.

706 Main

Joplin, Mo.

BEN FRANKLIN STORE
Headquarters for School Supplies

&

SENECA SUPER MARKET
Groceries & Meat

WALT'S SHOE STORE

1316 Main Street

Joplin, Mo.

*BEST WISHES
TO THE
CLASS OF 1961*

Bank of Neosho

2608 Main

Joplin, Mo.



Best Wishes to Class of 1961

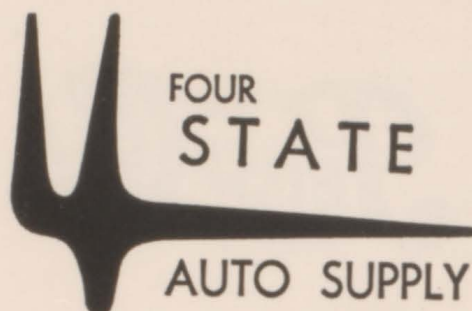
Office
1401 Main
Phone MA 4-5981

Residence
3002 Kentucky
Phone MA 4-5872

Joplin, Mo.

MAX KINNAMAN MOTORS
"Automobiles"

We Specialize in Low Mileage, Clean Cars



709 VIRGINIA AVENUE
JOPLIN, MISSOURI

SEVEN-UP – DR. PEPPER
BOTTLING COMPANY

Joplin

Missouri

WILSON'S FEED & SEED

"All Feed Needs"

DELAVAL DAIRY EQUIPMENT

14th & Main

Joplin, Mo.

Millwork

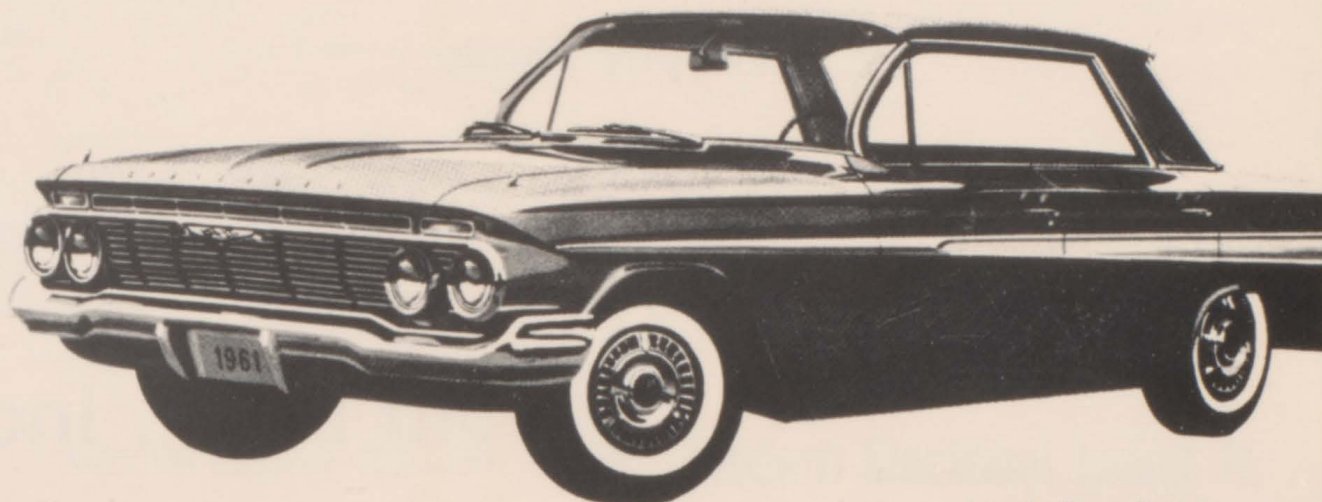
Hardware

Braeckel's, Inc.

Phone MA 3-3677

Joplin

Bill Williams Chevrolet Co.



Impala Sport Sedan

by CHEVROLET

Seneca, Mo.

Wiggins Bakery

Specializing
in
Birthday and Wedding Cakes

MA-3-7620

1702 Main

Joplin

H-H Sales & Service

110 N. Wood

Ph. GL 1-4184

Neosho, Missouri

General Repair Work
Authorized Dealer on Briggs
& Stratton, Clinton,
Lawnboy-Power Products
Kohler Lawson Engines

Locksmith, Keys of All Kinds

Portable Electric and Acetylene
Welding

COMPLIMENTS OF

Murphy Studio

Neosho, Missouri

CONNOR HOTEL

4th & Main
Joplin, Missouri

JOPLIN'S FINEST

MA 3-5100

Told Bros., Inc.

Signs

Joplin

Missouri

W. J. NELSON ELECTRIC CO.

1302 Main Street, Joplin, Mo.
MAyfair 4-5540

Commercial, Industrial, Residential
Wirings and Electric Supplies

WILDER'S RESTAURANT

1216 Main
Joplin

Famous for Good Things
to Eat and Drink

MOLLOY'S JEWELRY STORE

Students' Jewelry and
Christmas Gifts

Joplin, Mo.

O & S SUPPLY CO.

Automotive & Industrial
Clinton Engine Service
Distributors

Joplin, Missouri

Free Estimates and Planning Service

**NEWCO
Electric**

121 S. Wash

E. Side

Phone GL 1-3535

Neosho, Mo.

Seneca Truck Stop

MATTERS JEWELRY

Since 1892

Neosho Treasure Chest Jeweler

South Side of Square, Neosho

GL 1-3850

BEN CALLIHAN, PROP.

The Inter-State Grocer Co.

Wholesale Grocers

I.G.A. Food Stores Supply Depot



1027 Main
Joplin, Missouri

Compliments of

FIRST NATIONAL BANK

Neosho, Missouri

BROWNING FURNITURE COMPANY

Neosho, Missouri

Get What You Want, Add It to Your Bill

Furniture—Floor Coverings—Radios—
Washers—Refrigerators—Stoves

Ken Reynolds Pharmacy, Inc.

Best Wishes to One of the Best School Systems in Missouri.

—Ken

3126 Main Street

Joplin, Mo.

MA 3-3800

KIRK IMPLEMENT COMPANY

Highway 60-71 Junction West

Neosho, Mo.

McGINTY'S

Neosho

*Where Shopping Is
a Family Affair*

MFA MUTUAL AND COUNTRYSIDE INSURANCE

BECKNELL & BECKNELL, AGENTS

219 Main

Neosho, Mo.

GL 1-4873

Modern Electrical Living Is



Modern, FLAMELESS electrical living gives you many advantages. It's clean, safe, efficient and economical. Life is pleasantly carefree when you Live Better Electrically.

LIVE BETTER...Electrically



**THE EMPIRE DISTRICT
ELECTRIC COMPANY**

An Investor - Owned Electric Company

GRAHAM'S FLORIST

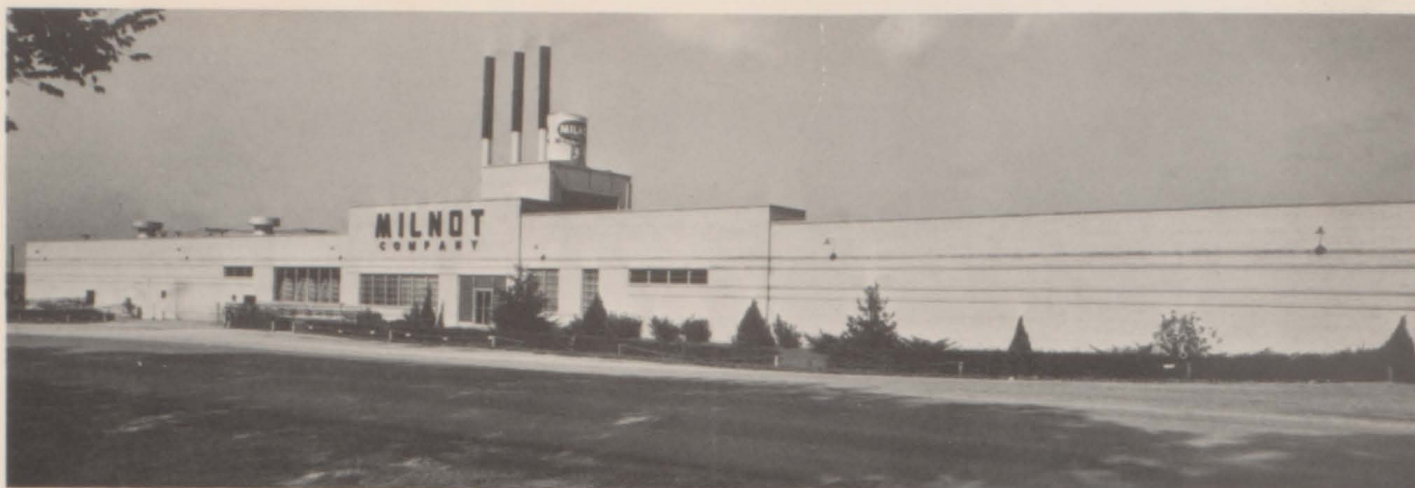
MR. and MRS. E. P. GRAHAM

Phone GL 1-3423

215 W. McKinney

Neosho, Mo.

The Shop of Personal Service



Milnot Company

Home Office
Litchfield, Ill.

Seneca, Missouri

Milnot

THE JOPLIN COCA-COLA BOTTLING CO.

1301 Virginia Avenue
Joplin, Mo.

SENECA AUTO SALVAGE

JONES PHARMACY WALGREEN AGENCY

Ph. GL 1-1177
Neosho, Mo.

MORRIS TV SERVICE

All Makes & Models
PR 6-5295
Seneca, Mo.



"Seneca Standard"

Tripoli



HISTORICAL

- 1868 Tripoli discovered on what is now our land.
- 1871 First commercial application, a polishing brick called "American Bath Brick," by Monarch Tripoli Company.
- 1885 First grinding mill built.
- 1888 American Tripoli Company organized.
- 1892 Incorporation of American Tripoli Company.
- 1919 Purchase of American Tripoli Company and Seneca Tripoli Company by Barnsdall Corporation, New York.
- 1920 New grinding mill built--Seneca, replacing plants Smithmount and Seneca.
- 1935 Name changed to Barnsdall Tripoli Corporation.
- 1939 New all-steel mill built replacing mill destroyed by fire December, 1938.
- 1947 Purchase of Barnsdall Tripoli Corporation by Miller-Osborn. Name changed to American Tripoli Corporation.
- 1954 Purchase of American Tripoli Corporation by The Carborundum Company, Niagara Falls, New York.
- 1955 Name changed to American Tripoli Division, The Carborundum Company.

AMERICAN TRIPOLI DIVISION
THE CARBORUNDUM COMPANY
SENECA, MISSOURI, U.S.A.

Page Sponsors

3	JOPLIN JANITOR SUPPLY COMPANY	
4	BUNNY BREAD COMPANY, Joplin	
5	JOPLIN SUPPLY COMPANY	
6	OWENS SPORTING GOODS	
7 . .	PAUL HAYS REAL ESTATE	FLOYD'S JEWELRY, Neosho
8 . .	EVANS REXALL DRUGS	BECKNELL & BECKNELL, Neosho
9 . .	SENECA HATCHERY	BLACK'S BARBER SHOP
10 . .	DR. JOHN B. ROBERTS	BUD CARLMEY'S STATION
13 . .	BRADY'S DRUG STORE	MARK'S MOTOR PORT
15 . .	GENE'S THRIFTY MARKET	WHITEWAY OIL STATION
16 . .	LOVE'S ANNEX	MHOON'S FOOD MARKET
17 . .	LA VERNE'S BEAUTY SHOP	BENNETT'S BARBER SHOP
18 . .	DAIRY BAR	ROSIERE'S DX STATION
19 . .	DR. M. S. MENDENHALL	TRESSA'S BEAUTY SHOP
21 . .	FUGATE AND MILLER AUTO	HICKORY HOUSE
22 . .	CARL'S SERVICE STATION	FISHER LUMBER COMPANY
24 . .	WATTS TEXACO STATION	SULLIVAN'S GROCERY
29 . .	HERRELSON TRUCK STOP	VOWELS STATION
30 . .	BUSKE LINES, INC.	WHIPKEY'S STATION
31 . .	DR. GEORGE O. HICKEY	HOLIDAY THEATER
32 . .	OZARK ENGINEERING COMPANY	MARTIN'S, Joplin
33 . .	THOMAS FURNITURE COMPANY	RAMSAY'S, Joplin
34 . .	15th STREET LUMBER COMPANY	WALLER'S BUF-A-TERIA, Joplin
35 . .	SHERWOOD CLEANERS	WHITEWAY FEED & OIL, Joplin
37 . .	HOAG COFFEE & EQUIPMENT CO.	McKEE'S JEWELRY, Joplin
41 . .	GATES PHARMACY	CARLSON'S HARDWARE, Joplin
46 . .	ERNIE WILLIAMSON MUSIC HOUSE	KEYSTONE COFFEE SHOP, Joplin
60	BIDDLECOME'S FUNERAL	
61	CRAWFORD MILLING COMPANY	
74	JOHN KELLY, ATTORNEY	
75	JOHN KELLY, ATTORNEY	

Acknowledgment

We, the 1961 SENECA WARRIOR staff, feel a great indebtedness to all who cooperated in the production of this yearbook. We say "Thanks" to our advertisers, our publisher, our photographers, the faculty of S.H.S., and our adviser, Mrs. Reitha McCracken.

Facts regarding the historical background of the Seneca Indians were authenticated in Muriel H. Wright's A GUIDE TO THE INDIAN TRIBES OF OKLAHOMA.

--The Staff

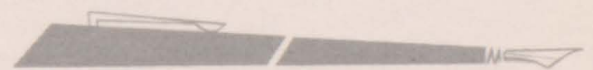
Index

- ACTIVITIES 52-73
 Adams, Jake 28
 Adams, Rachel 32
 ALL-SCHOOL PLAY 72
 Allen, Martha 12,44,45
 Allgood, Patty 28
 Anderson, Carolyn 24,56
 Anderson, Gary 32
 Anderson, Nancy 24,55
 Anderson, Phyllis 32
 Anderson, Russell 28
 Anderson, Terry 12,39,68,72,74,77,78,79,82
 Arnold, Barbara 28
 Arnold, Betty 32
 Arnold, Beverly 32
 Arnold, Mildred 28,39
 ATHLETICS 74-79
 Baldwin, Jim 24
 Balls, Shirley 32, 56
 BAND 46
 Barnes, Larry 28,56,58,66,72,74,75,82
 BASKETBALL 78
 Bates, Darlene 28
 Beavers, Barbara 28,64
 Beavers, Earl 13,76
 Beavers, Loretta 32
 Bennett, Linda 13,42,44,45,54,55,56,57,59,62
 Bennett, Twyla 4,13,40,44,45,47,54,56,59,67,72,81
 Bettis, Nancy 28,39,45
 Black, Shirley 4,13,40,44,45,47,54,55,59,67,81,85
 Blatter, Marilyn 13,40,54,64,66,83
 Boman, Nina 32,45,84
 Boman, Sharon 28
 Brady, Jack 5
 Brady, Jim 32,47
 Brady, Shirley 14,40,45,54,56,68,81
 Brattin, Ronnie 10,14,59,69,74
 Brattin, Shirley 29,47,56,57,69
 Brecht, Jerry 14,83
 Brecht, Mary 29,45
 Brizendine, Victoria 24,50
 Brown, Beverly 14,40,56,59,65
 Brown, Derald 14,40
 Brown, Donetta 32
 Brown, Jerry 29,43
 Brown, Linda 14,46,47,54
 Brown, Mrs. Mabel 48,56
 Bryant, Margaret 15,40,45,46,47,54,65
 Bryant, Wayne 33,41,42,84
 Buck, Danny 29
 Burkhardt, Darrel 24
 Burkhardt, Linda 33
 Burris, Howard 33
 Buzzard, Mrs. Inez 8,41
 Calloway, Gary 24,42,44,58,72,73,74,77,78,79
 Carey, Patricia 15,40,45,64,72
 Carey, Sharon 33,45,64
 Carlisle, Treva 29,47,56,66
 Chapman, Lanea 25
 CHEERLEADERS 57
 Clark, Bobby 33
 Clark, Freddie 33
 Clark, Nelson 25,39,56,58,72,73,78
 CLASSES 40-47
 Clemons, Phillip 29,39,64
 Clogston, Joe 33
 Clouse, Carl 29
 Coburn, Carol Ann 4,33,45,47,50,56
 Cole, Jerry 25
 COMMERCIAL 40
 Conduff, Rayma 29,39,45
 Conduff, Royce 25,47,52,58
 Conduff, Tommy 25,44,56,73,83
 Connell, Donald 32,33,44
 Conner, Richard 39,49
 Cook, Eugene 25
 Cook, Janice 15,29,40,52,54,56,57
 Cook, Jerry 29
 Cook, Raymond 33
 Cooper, Bonnie 25,73
 Cooper, Ronnie 33
 Cooper, Sally 29,45,56,59,70
 Cory, Laverl 29,44,81
 Cox, Donald 33,44
 Cox, Johnnie 29,64,70,75
 Cox, Sharon 25,42,56,65
 Crabtree, Ernest 5
 Crain, Lawrence 29
 Crain, Loyd 15
 Cunningham, Larry 33,41,59
 Cupp, James 16,41
 Cupp, Patsy 25
 Cupp, Ruby 33
 Curry, Brian 25,64,72
 Daniels, David 16,40
 Daniels, Carol 33,56
 Darr, Carolyn 4,16,40,44,45,47,54,55,56,59,66,72,81
 Davis, Charles 29,39,56,59,78
 Decker, Malcolm 33,41
 DeMasters, David 25
 Dinwiddie, Donald 25,49,74,77,79,81
 Divine, Mary Ellen 25
 Dousette, Tony 25,58,59,71,85
 Dragoo, John 5
 Drake, Deloris 16,40,54
 DRIVERS EDUCATION 51
 Dunbar, Shirley 33,45,47
 Durbin, Danny 33
 Durbin, Karen 25
 Durbin, Kay 16,41
 Durbin, Sandra 33,41
 Eddings, Bevelyn 29,56,64
 Edwards, Michael 33
 Edwards, Sam 33
 Ehrhart, Kay 32,33,45,47,56,59
 EIGHTH GRADE 37
 Elbert, Frances 25,38,45,58,80
 Elliott, Michael 8,44,45,47
 Ellis, Larry 10,25,42,58,59,73,78
 Erwin, Linda 29
 Etherton, Robert 33,41
 FACULTY 8-9
 Farmer, Bob 33
 Farmer, David 33
 Farmer, Peggie 33
 Farmer, Tommy 25
 Ferguson, Mary 29
 Fink, Shannon 34
 Flaherty, Peggy 25
 Fleetwood, Sydnia 16,44,45,52,54,55,56,59
 FOOTBALL 74-77
 FOOTBALL QUEEN 60
 Forrest, Virginia 25
 Foster, Deanna 25,41
 Fowler, Burl 8,50,74,74,78
 Fox, Donna Kay 34,45,47,50,56,61
 Fox, O. W. 6
 Fredenburg, Leasa 34,41,56

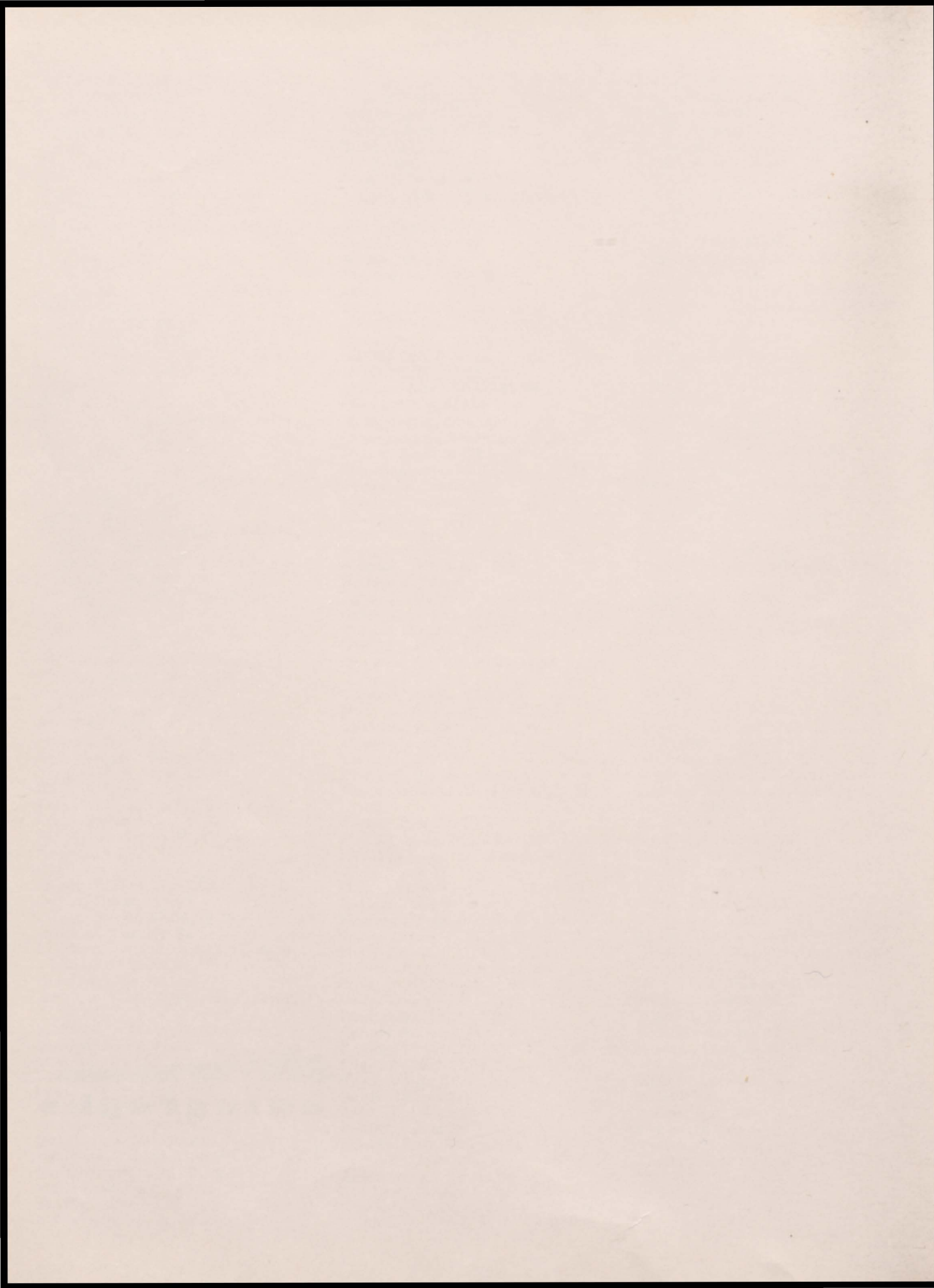
Index

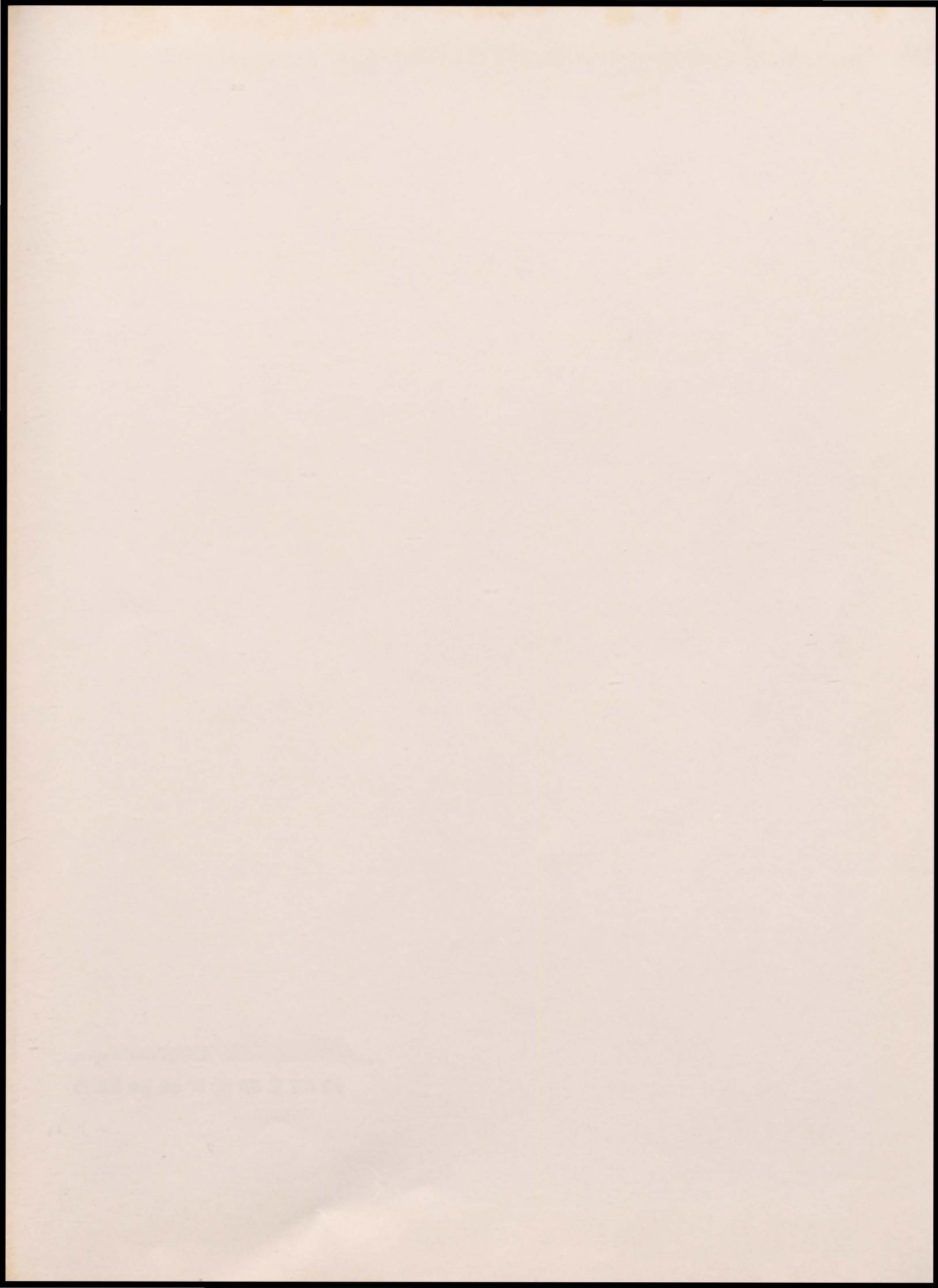
- FRESHMEN 32-36
 Gallup, Bill 8,38,56
 Gaston, Calvin 25,50
 Gaston, George 29
 Gaston, Leon 34
 Gates, Jay Dee 34
 Gaw, Jerry 34,41
 Gilbert, Mrs. Marjorie 9,39,64
 Gilman, Jack 17,41,59,67,79
 Gilman, Mary 25,42,55,56,65,73
 Gilstrap, Jerry 29
 Gilstrap, Robert 29
 GLEE CLUB 44
 Glover, Mary Ellen 17,42,54,81
 Golden, Howard 34
 Golden, Janice 34,85
 Hines, Sally 34,50,85
 Hirsch, Quinton 26,67,74,77,79
 Hoff, Charles 18,39,74,76,82
 Hoff, Mary 34,45,56
 Hoffman, Alice 18
 Hoffman, Arthur 30,74,75
 Hoke, Carol 30,48,64
 HOME ECONOMICS 49
 Hoover, Carolyn 30
 Hottel, Jan 29,30,43,47,56,60
 Howard, Billy 34,41
 Howard, Bob 19,50
 Howard, Robert 26,59,63,70,75,79
 Howsmon, Mrs. Wilma 5,6
 Huffman, Evelyn 19,45,48,54
 Huffman, John 34
 Hutchison, Beverly 10,34,45,56
 INDUSTRIAL ARTS 48
 Isbell, Ben 34
 Isbell, John 30
 John, Raymond 26
 Johnson, Marvin 26
 Jones, Bill 9,43,74,75
 Jones, Clara 34
 JUNIORS 24-27
 JUNIOR PLAY 73
 Kellenberger, Judith 19,82
 King, George 34,41,59,63
 King, Judy 26
 King, Mark 19,54,70,78
 King, Wayne 5
 Kingfisher, Sylvia 30,47
 Kittrell, Bill 26,75
 Kyle, Joe 34
 Lagers, Deloris 26,41,45
 Lagers, Shirley 26,45
 Lais, Joyce 26,47,54,56,73
 Lankford, Carolyn 35
 Lankford, Janet 19,40,42,44,45,54,
 55,56,69,81,83,85
 Lankford, Joe 35
 Lankford, Linda 20,40,45,46,47,51,
 54,59
 Lankford, Patricia 35,42,45,56
 Lankford, Ruth 34,45
 Laughlin, Bob 30
 Lawson, Morris 35,78
 Lewis, David 26,85
 LIBRARIANS 65
 Livingston, Larry 35,41,71
 McCracken, Mrs. Reitha 9,51,84
 McGehee, Janice 35,45,80
 McGehee, Roberta 30,45,80
 McKee, Donna 30,45,56
 McNary, Charles 26
 McReynolds, Judy 32,35,41,63
 Maben, Robert 9,49
 Macon, Randol 28,30,58,75,78
 Mailles, Aleta 30,45,47,56,63,70
 Mailles, Lenny 30,58,75
 Margerum, Jerry 35
 Margerum, Johnny 26
 Marney, Alice 26,64
 Martin, Bobby 20,40,56,63,69,74,
 76,79,85
 MATHEMATICS 43
 Mathre, Evelyn 30
 Mhoon, Rex 9,59
 Millard, Steve 26,49
 Miller, Arvin 35
 Mills, Lillie 26,45,50,55,56
 MISS MERRY CHRISTMAS 64
 Mittag, Lonny 30,56
 MIXED CHORUS 45
 MOCCASIN PRINT 54
 Moffett, Mary 30,45,83,84
 Montgomery, Linda 20
 Montgomery, Michael 20,43
 Montgomery, Rosemary 30,56
 Moore, Dean 30,78
 Moore, Evelyn 30
 Moore, Marcella 35
 Morgan, Jim 30,75,78
 Morgan, Sue 35,45,47
 Moss, Dorothy 30,45
 Musgrave, Mary 35
 Nichols, Mrs. Doris 9,40
 Nothnagel, James 35
 Nutting, Joyce 26,44,45,63,73
 Nutting, Robert 35,44
 O'Dell, Paulette 31,45
 OFFICE HELPERS 65
 Oleman, Barbara 12,20,45,54,55,56,
 81
 Oleman, Donna 35,45,56
 Oleman, Karen 26,38,45,56,
 Osborne, Frankie 31,45
 Owens, Linda 31
 Oxford, J. W. 26
 Parmley, Barbara 35,45,55
 Pence, Barbara 26,44,45,47,56,59,
 67
 Pence, John 35,47,84
 PHYSICAL EDUCATION 50
 Pierce, Cheryl 28,31,44,45,47,56,
 58,59
 Pierce, Fredaline 21,41,45,54,65
 Pittman, Chester 21,39,56,74
 Platner, Quinton 31,63,64,69,84
 Poole, Foster 31,47,50,75,78
 Poor, Tom 21,56,74,76,79,83
 Powers, Anne 21,54,56,59,64
 Price, Bobby 26,42,75,85
 Price, Don 35
 Price, Nina 35
 Record, Ralph 9,43
 Reding, Sherry 35
 Reed, Ronald 27,44,49
 Reed, Twyla 35,45,71
 Reese, Darrel 21,82
 Reid, Rod 9,43,78
 Renfro, Gover 35
 Rhodes, Gerald 21,82,85
 Rhokard, Linda 27
 Ridenour, Arlene 31,56
 Rinehart, Connie 31,45,56,83
 Rinehart, Susan 10,31,44,45,47,56,
 58
 Ritter, Beulah 27,59,82
 Ritter, Kenneth 27,49
 Ritter, Larry 31
 Ritter, Sharon 27,50,55
 Roark, Max 22,54,59,68,72
 Roark, Robert 22,35
 Roberts, Danny 22
 Robinson, Elvin 35,44,56
 Rogers Kenny 12,22,59,66,74,77,
 78
 Rogers, Terry 27,78
 Rosiere, Judy 2,4,22,44,45,47,54,
 55,56,59,72,81
 Rosiere, Ronnie 2,31,47,56,66,75
 Routledge, Carolyn 22,54,56,57,65,
 68,72
 Ruddick, Dorothy 31
 Ruddick, Jane 35
 Sanders, Sam 27,41,49
 SCIENCE 42
 SENIORS 12-16
 Servis, Harold 9,72
 Sherer, Robert 27,45,56
 Sherer, Shira 31,45,47,56,84
 Sherwood, Etta 27
 Sherwood, Patty 36,45,56
 Sherwood, Stanley 36,41
 Shipp, Doris 27,45,50,56,85
 Shipp, Sylvia 36
 Skaggs, Clifford 22,85
 Smith, Bob 23,59,67,74,76,78,79,
 84
 SNAPSHOTS 80-85
 Sneed, Clarence 23
 Tucker, Patricia 27,45
 Turner, Robin 36
 Turney, Carolyn 31,44,45
 Turney, Donna 23,45,51,56
 TWIRLERS 47
 Vader, Connie 23,47
 Vowels, Michael 27,42,59,74,77,
 78,79
 Walden, Dick 27,41
 Walker, Lynette 36,45,47,56,80
 Walker, Ramona 36,45,56,82
 Wallen, Darrel 27,43
 WARRIOR QUEEN 62
 WARRIOR STAFF 55
 Watkins, Jack 31,58,78
 Watkins, Leroy 36
 Watts, Mac 5
 Wells, Mrs. Iva 7,42
 Wells, J.A. 9,41
 White, Thea 47,56,84
 Whitehead, Diane 36,38,45,56,85
 Whitehead, Ricky 31,58,59,75,77
 Whitehead, Sharon 36,56
 Whitted, Martha 36
 Whitted, Ruth 36
 Wilfley, Lyndia 31
 Wilkins, Charles 36
 Wilkins, Oliver 31
 Wilson, James 27,49
 Wilson, Max 31
 Wilson, Van 36
 Worley, Karen 31
 Wyrick, Payton 36,41
 Yocum, Sara 31,45,47,84





autographs







autographs

